



Retraction Systems, Retractors, Hooks – Sperrersysteme, Spreizer und Wundhaken

Rib Retractors

Rippensperrer

Sales unit of blades:

PAA = pair

Bestelleinheit der Blätter:

PAA = Paar



FB823R 75 x 75 mm

Blades

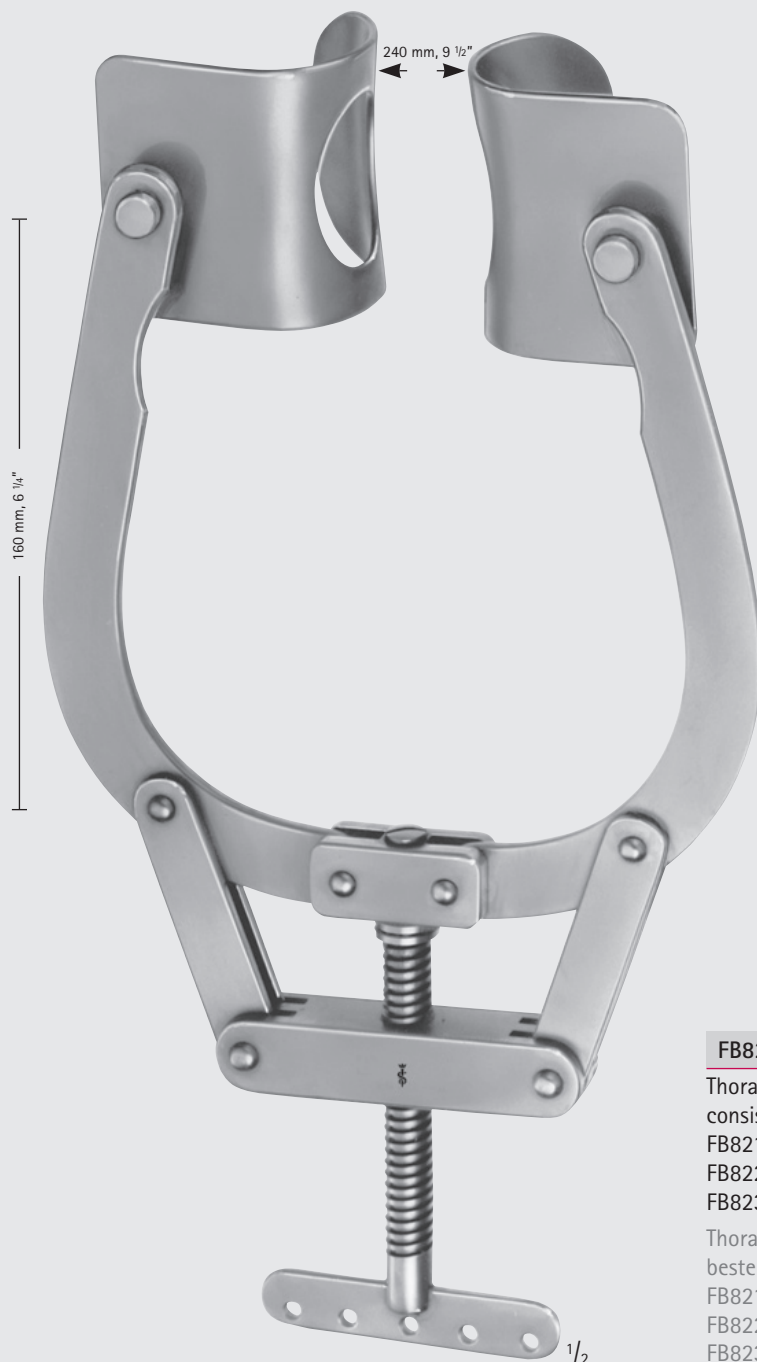
Blätter



FB822R 42 x 65 mm

Blades

Blätter



FB820R

Thoracic retractor (Mercedes-Retractor) complete, consisting of:

FB821R Retractor only

FB822R Blades (pair)

FB823R Blades (pair)

Thoraxsperrer (Mercedes-Sperrer) komplett, bestehend aus:

FB821R Sperrer allein

FB822R Blätter (Paar)

FB823R Blätter (Paar)

Retractors
Sperrer

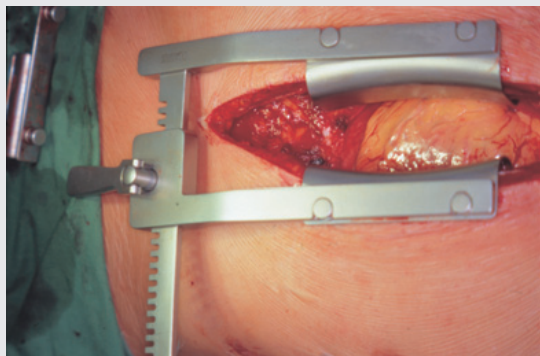
MILLIMETERS

Retraction Systems, Retractors, Hooks – Sperrersysteme, Spreizer und Wundhaken

Rib Retractors

Rippensperrer

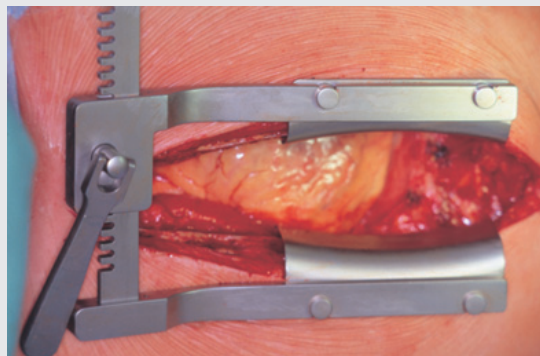
The spreader can be used optionally in cranial (picture 2, 2a) or caudal (picture 1, 1a) position. As the retractor is used in cranial position the bend up arms show away from the patient in order to protect the neck from pressure.



1

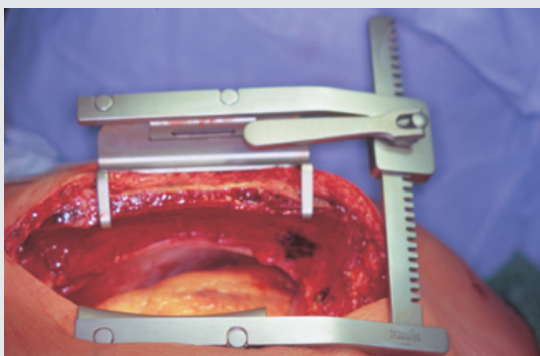
Used as sternum retractor (picture 1, 2)

Der Sperrer kann optional nach kranial (Bild 2, 2a) und kaudal (Bild 1, 1a) eingesetzt werden, wobei beim Einsatz nach kranial die Aufbiegung der Arme nach oben, vom Patienten weg zeigt, um Druck auf den Hals zu vermeiden.



2

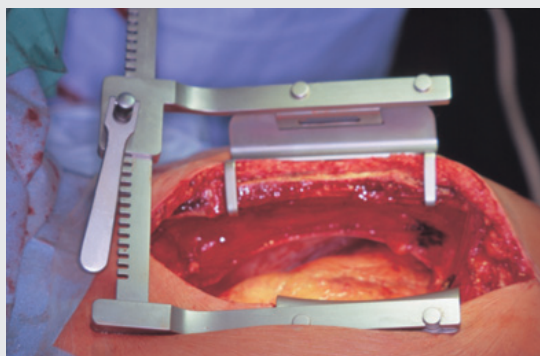
Einsatz als Sternumsperrer (Bild 1, 2)



1a

Used for preparation of the arteria mammaria interna (picture 1a, 2a).

The side of the sternum, where the arteria mammaria interna shall be dissected is lifted up automatically due to the spreading effect of the retractor. The result is an easier preparation of the arteria mammaria interna.



2a

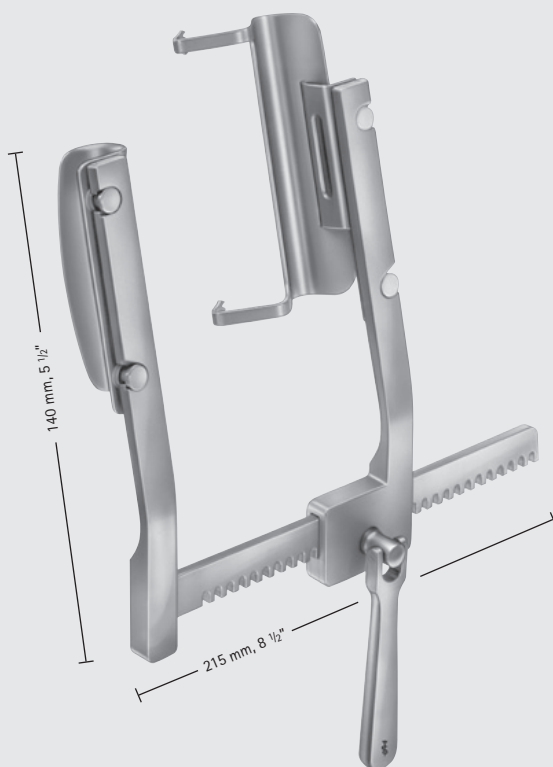
Einsatz zur Darstellung der Arteria mammaria interna (Bild 1a, 2a).

Die Seite des Sternums, auf der die Arteria mammaria interna präpariert werden soll, wird durch die Spreizwirkung des Sperrers automatisch angehoben. Das Ergebnis ist eine einfachere Präparation der Arteria mammaria interna.



Retraction Systems, Retractors, Hooks – Sperrersysteme, Spreizer und Wundhaken

Rib Retractors
Rippensperrer



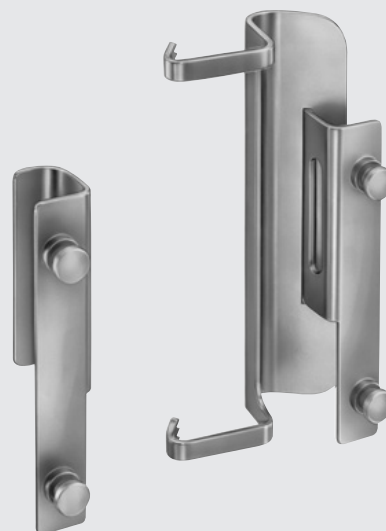
FC060R

Mammia spreader complete,
consisting of:

- FC061R Retractor only
- FC062R Mammia blade complete with
holding blades left and right
- FC063R Sternum blades (pair)
- FC064R Sternum blades (pair)

Mammia Sperrer komplett,
bestehend aus:

- FC061R Sperrer allein
- FC062R Mammiablatt, komplett mit
Aufnahmeblatt links und rechts
- FC063R Sternumblätter (Paar)
- FC064R Sternumblätter (Paar)



FC062R

Mammia blade, complete
Mammiablatt, komplett



FC063R 30 x 100 mm

Sternum blades
Sternumblätter



FC064R 40 x 100 mm

Sternum blades
Sternumblätter

Retractors
Sperrer

MILLIMETERS

Retraction Systems, Retractors, Hooks – Sperrersysteme, Spreizer und Wundhaken

Special Retractors

Spezialhaken

Dimensions for blade size of retractors

1st number = depth Example: 25 x 38 mm

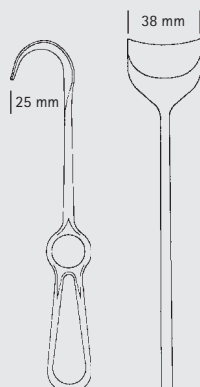
2nd number = width

Maßangaben für Blattgrößen der Wundhaken

1. Zahl = Tiefe

Beispiel: 25 x 38 mm

2. Zahl = Breite



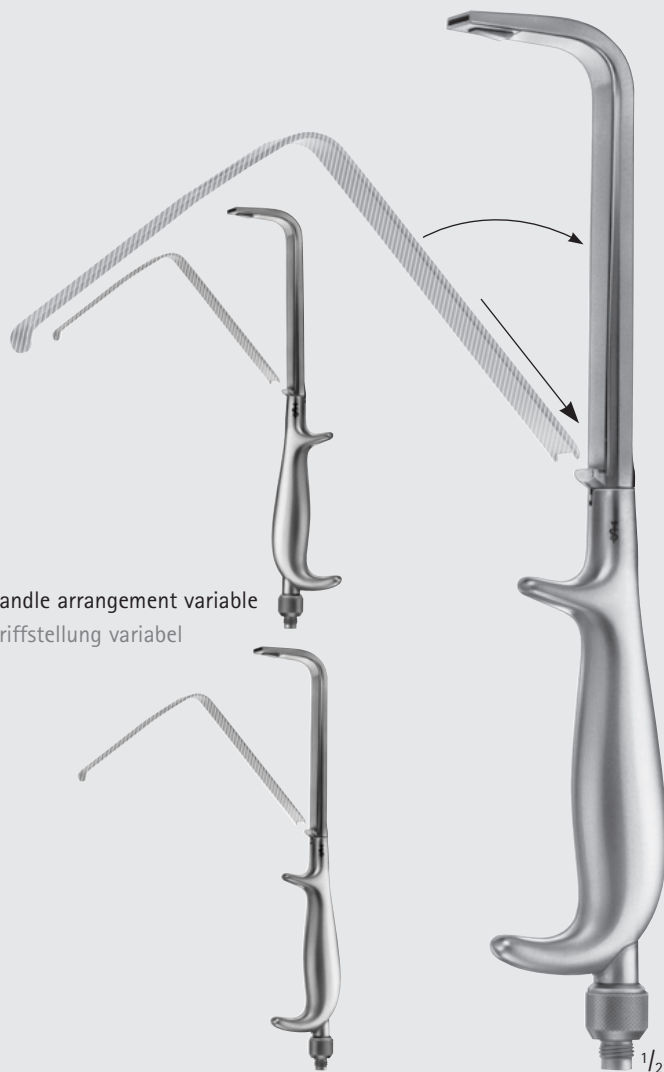
Vario retractor system with integrated cold light, for additional intensive illumination of deep and complicated operation fields.

■ To be used with Aesculap light source, see page 276 – 279

Vario-Wundhaken-System mit integriertem Kaltlicht, zur zusätzlichen, intensiven Ausleuchtung des Operationsfeldes, speziell bei komplizierten, in die Tiefe gehenden Eingriffen.

■ Zu verwenden mit Aesculap Lichtquelle, siehe Seite 276 – 279

Handle arrangement variable
Griffstellung variabel



BT800R

Handle with cold light carrier for retractor blades

Handgriff mit Kaltlichtleiter, zur Aufnahme von Wundhakenblätter

280 mm, 11"



BT799R

Handle with cold light carrier for retractor blades

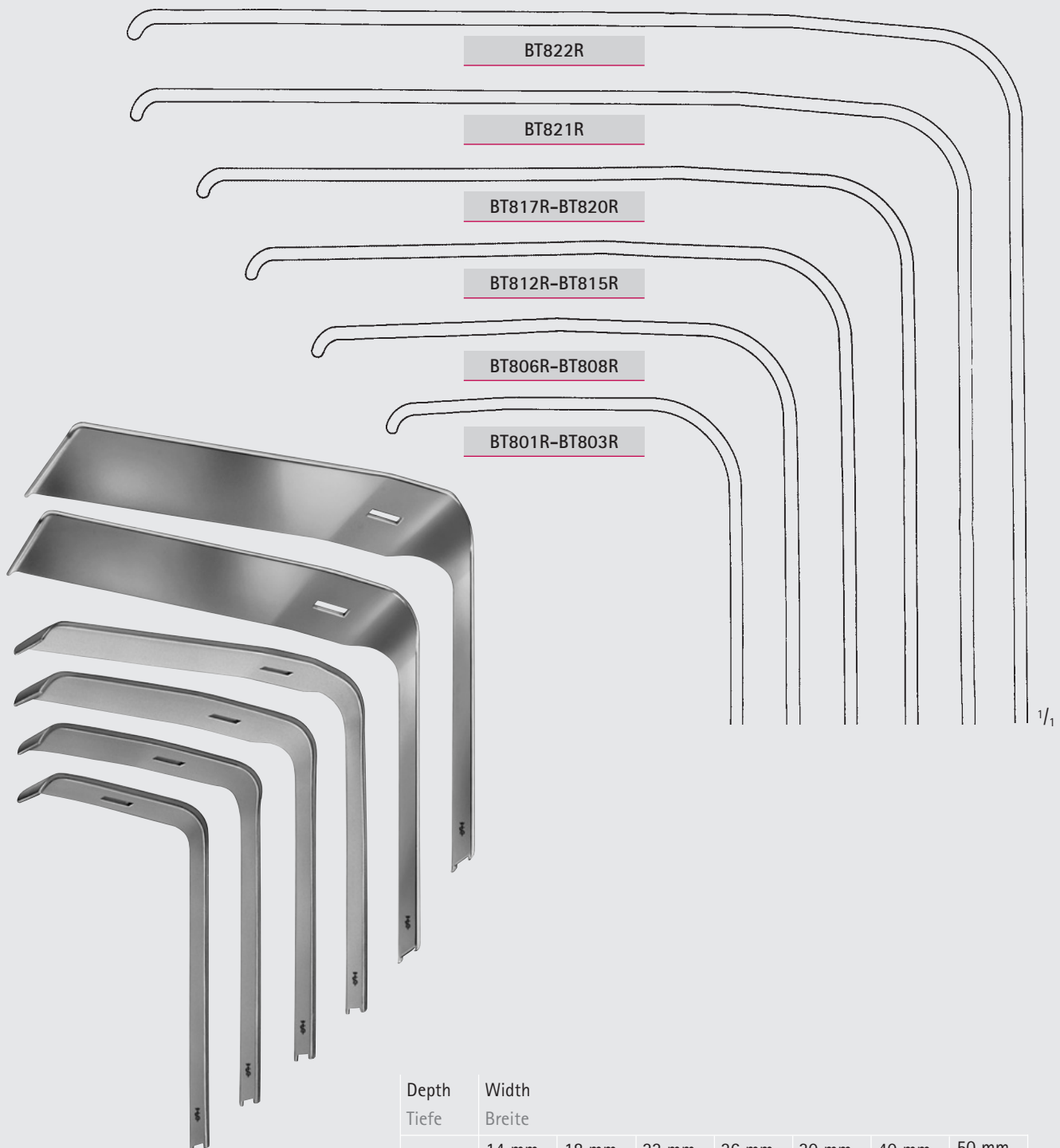
Handgriff mit Kaltlichtleiter, zur Aufnahme von Wundhakenblättern

180 mm, 7"



Retraction Systems, Retractors, Hooks – Sperrersysteme, Spreizer und Wundhaken

Special Retractors Spezialhaken



Vario retractor system
Vario-Wundhaken-System

BT801R-BT822R

Retractor blades for handles BT799R and BT800R
Wundhakenblätter
passend auf die Handgriffe BT799R und BT800R

Depth Tiefe	Width Breite						
	14 mm	18 mm	22 mm	26 mm	30 mm	40 mm	50 mm
55 mm	BT801R	BT802R	BT803R				
75 mm	BT806R	BT807R	BT808R				
95 mm		BT812R	BT813R	BT814R	BT815R		
115 mm		BT817R	BT818R	BT819R	BT820R		
135 mm						BT821R	
145 mm							BT822R

Retraction Systems, Retractors, Hooks – Sperrersysteme, Spreizer und Wundhaken

Special Retractors

Spezialhaken

Dimensions for blade size of retractors

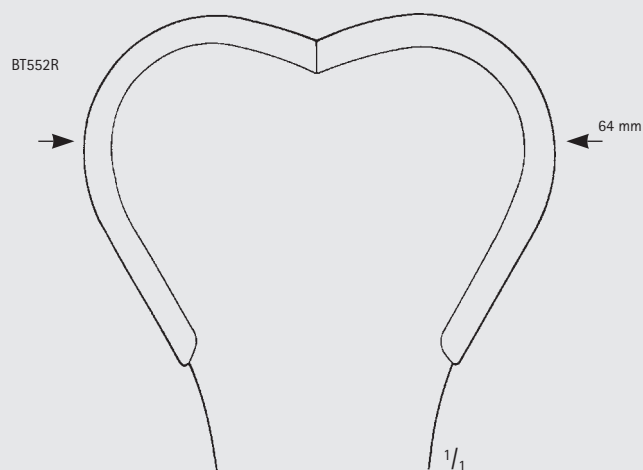
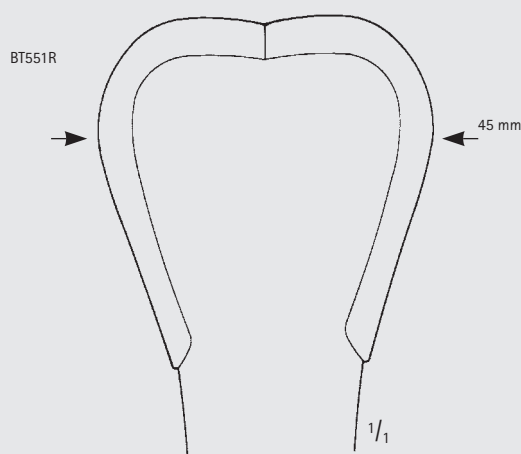
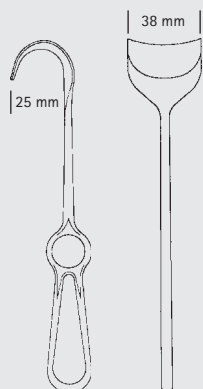
1st number = depth Example: 25 x 38 mm

2nd number = width

Maßangaben für Blattgrößen der Wundhaken

1. Zahl = Tiefe Beispiel: 25 x 38 mm

2. Zahl = Breite



HARRINGTON

BT551R 123 x 45 mm

BT552R 123 x 64 mm

flexible

federnd

295 mm, 11 3/4"



Retraction Systems, Retractors, Hooks – Sperrersysteme, Spreizer und Wundhaken

Special Retractors Spezialhaken



HARRINGTON-PEMBERTON

BT553R 175 x 64 mm

flexible

federnd

295 mm, 11 $\frac{3}{4}$ "

Retractors
Sperrer

MILLIMETERS

Retraction Systems, Retractors, Hooks – Sperrersysteme, Spreizer und Wundhaken

Special Retractors

Spezialhaken

Dimensions for blade size of retractors

1st number = depth Example: 25 x 38 mm

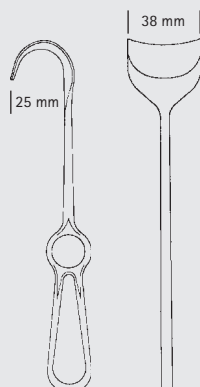
2nd number = width

Maßangaben für Blattgrößen der Wundhaken

1. Zahl = Tiefe

Beispiel: 25 x 38 mm

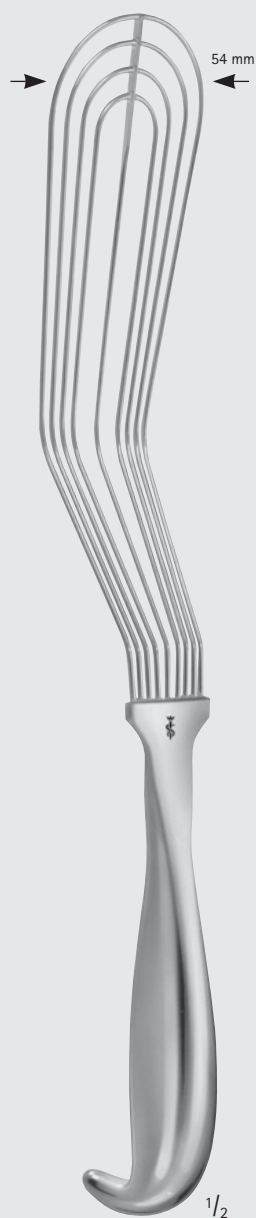
2. Zahl = Breite



ALLISON

BT559R

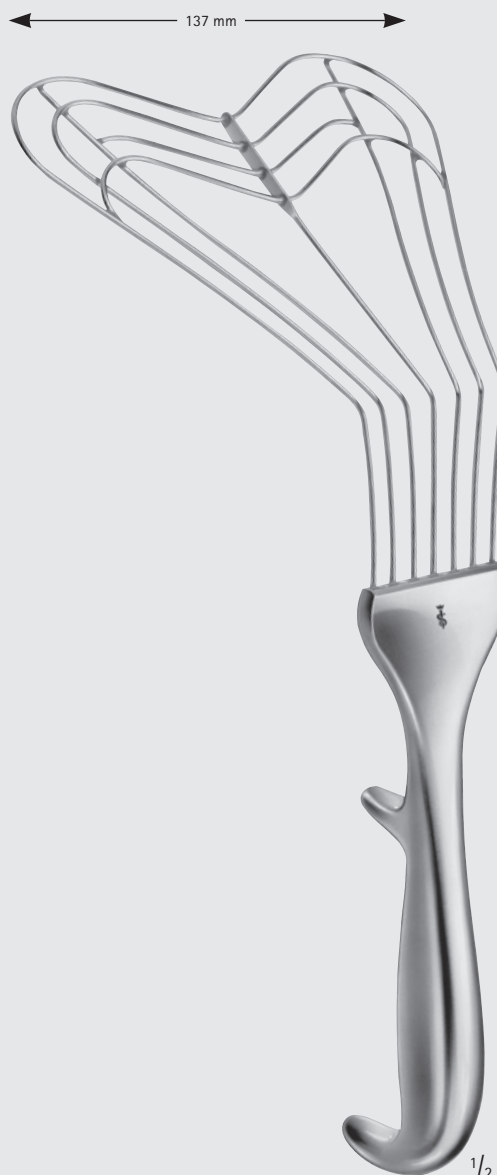
255 mm, 10"



ALLISON

BT560R

320 mm, 12 3/4"

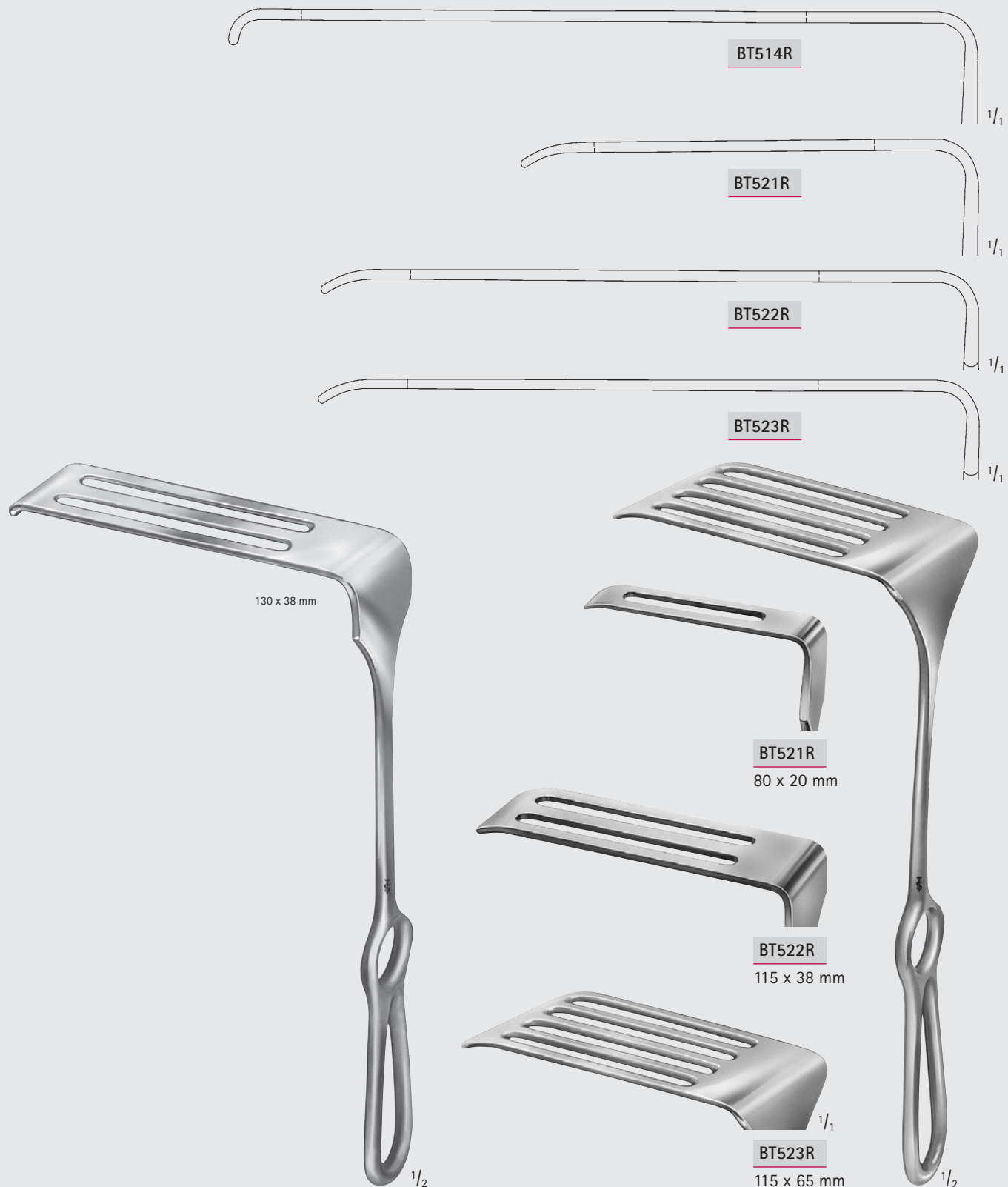


ALLISON

BT561R

300 mm, 12"

Spezialhaken



255 mm, 10"

Retraction Systems, Retractors, Hooks – Sperrersysteme, Spreizer und Wundhaken

Special Retractors

Spezialhaken

Dimensions for blade size of retractors

1st number = depth Example: 25 x 38 mm

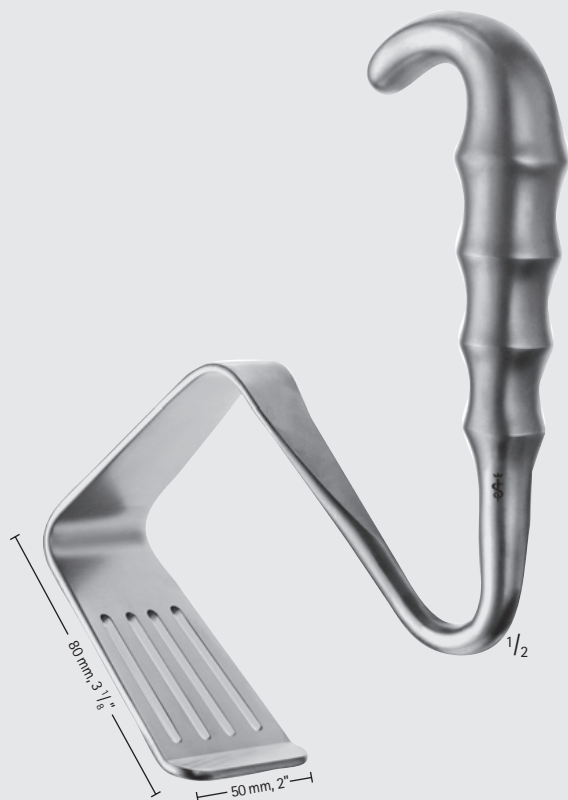
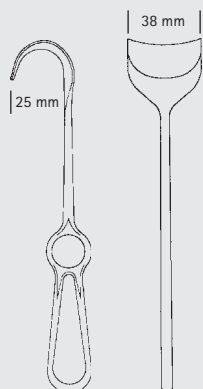
2nd number = width

Maßangaben für Blattgrößen der Wundhaken

1. Zahl = Tiefe

Beispiel: 25 x 38 mm

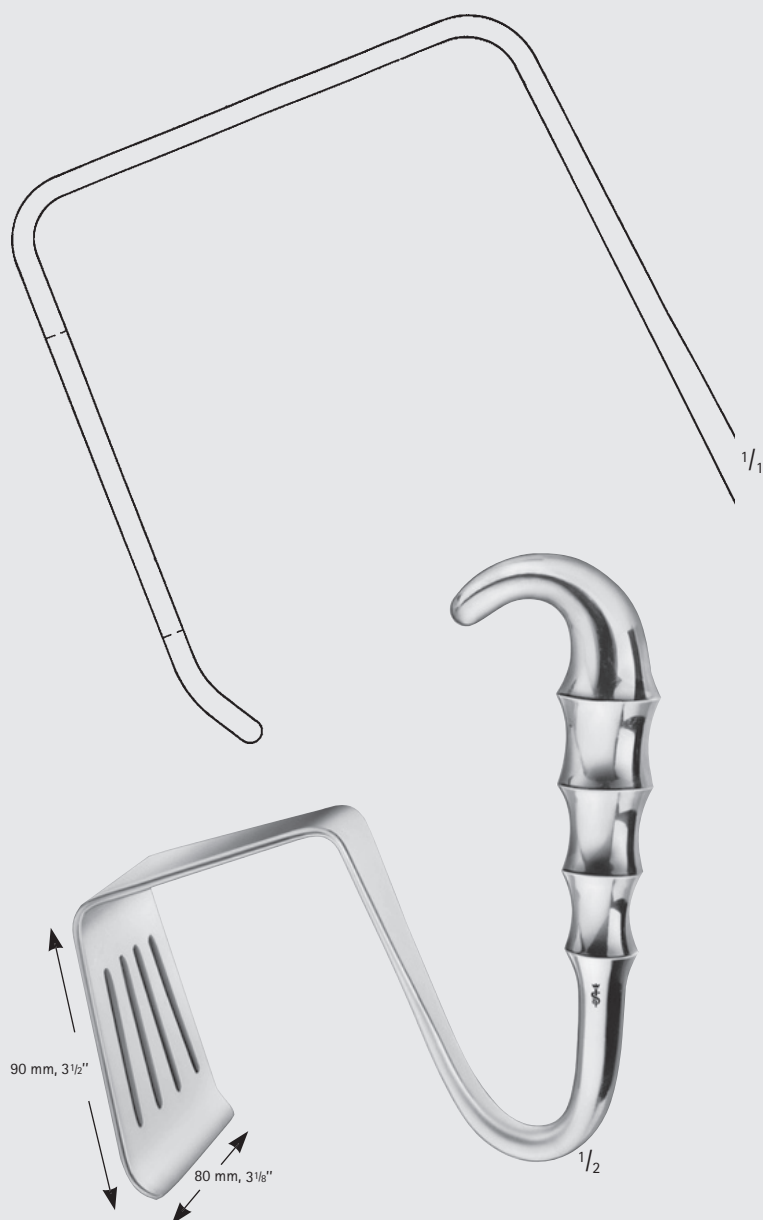
2. Zahl = Breite



DAVIDSON

MB758R

195 mm, 7 3/4"



DAVIDSON

BT531R

195 mm, 7 3/4"



Retraction Systems, Retractors, Hooks – Sperrersysteme, Spreizer und Wundhaken

Special Retractors

Spezialhaken



Retractors
Sperrer

MILLIMETERS

Retraction Systems, Retractors, Hooks – Sperrersysteme, Spreizer und Wundhaken

Special Retractors

Spezialhaken

Dimensions for blade size of retractors

1st number = depth Example: 25 x 38 mm

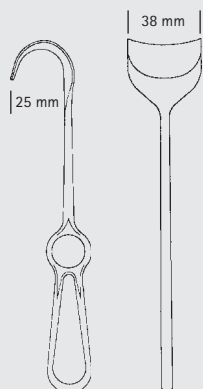
2nd number = width

Maßangaben für Blattgrößen der Wundhaken

1. Zahl = Tiefe

Beispiel: 25 x 38 mm

2. Zahl = Breite



MD076

10 mm

160 mm

6 1/4"

MD077

13 mm

180 mm

7"

HASSON

MD076-MD077

Set, consisting of:

2 retractors

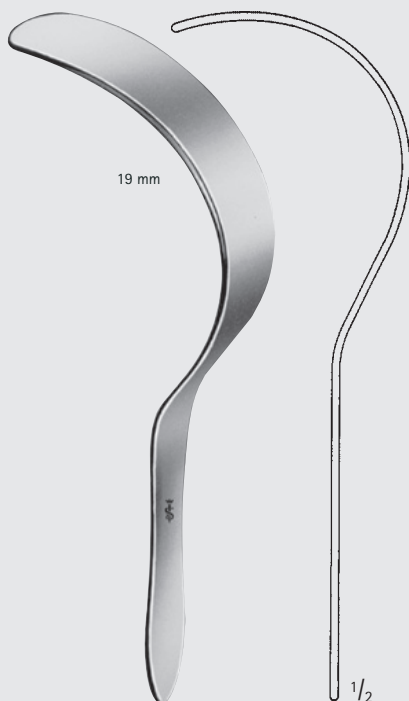
Set, bestehend aus

2 Wundhaken



Retraction Systems, Retractors, Hooks – Sperrersysteme, Spreizer und Wundhaken

Special Retractors Spezialhaken



DEAVER
BT600R
Fig. 000
180 mm, 7"



DEAVER
BT601R
Fig. 00
215 mm, 8 1/2"



DEAVER
BT606R
Fig. 0
235 mm, 9 1/4"



Retractors
Sperrer

MILLIMETERS

Retraction Systems, Retractors, Hooks – Sperrersysteme, Spreizer und Wundhaken

Special Retractors

Spezialhaken

Dimensions for blade size of retractors

1st number = depth Example: 25 x 38 mm

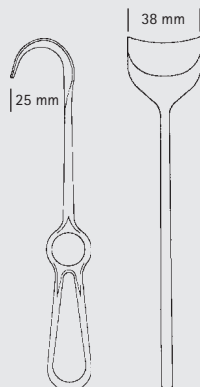
2nd number = width

Maßangaben für Blattgrößen der Wundhaken

1. Zahl = Tiefe

Beispiel: 25 x 38 mm

2. Zahl = Breite

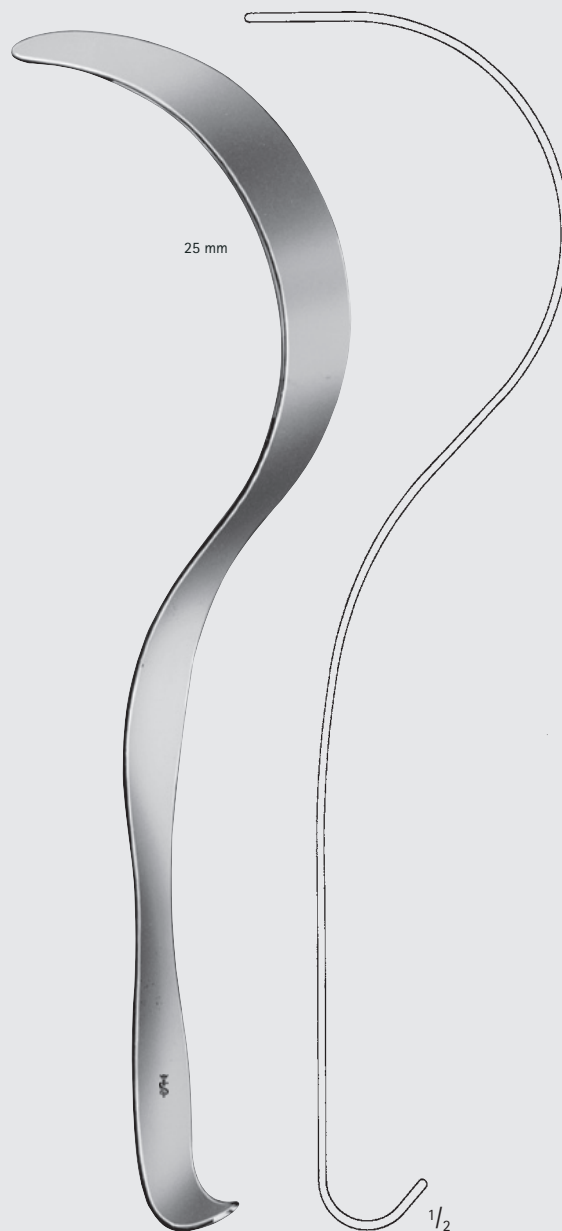


DEAVER

BT602R

Fig. 1

300 mm, 12"



DEAVER

BT603R

Fig. 2

315 mm, 12 1/2"



Retraction Systems, Retractors, Hooks – Sperrersysteme, Spreizer und Wundhaken

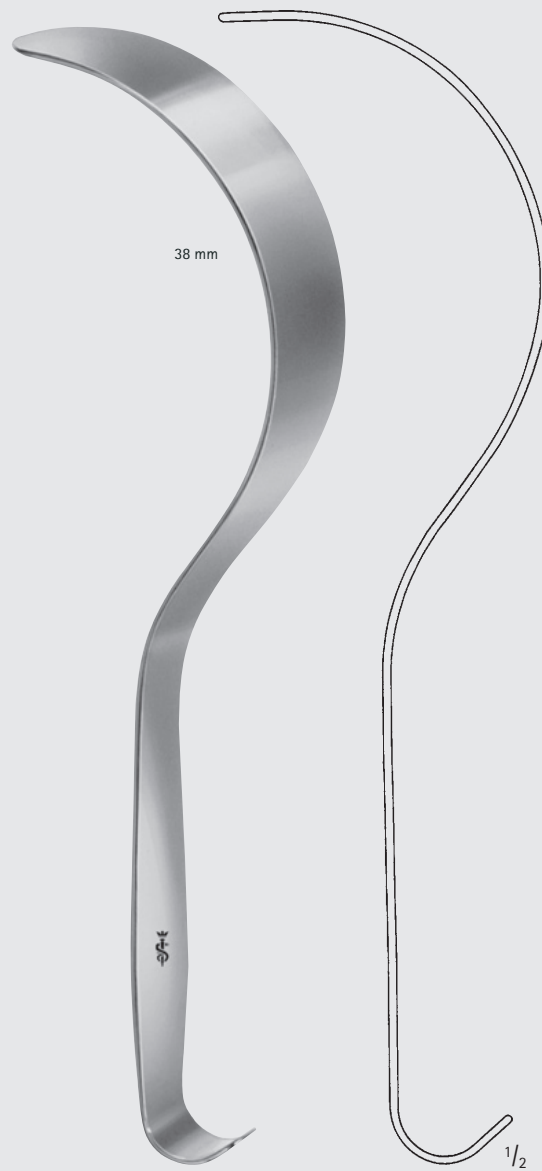
Special Retractors Spezialhaken



DEAYER

BT607R

Fig. 2 $1\frac{1}{2}$
365 mm, 14 $1\frac{1}{2}$ "



DEAYER

BT604R

Fig. 3
300 mm, 12"

Retractors
Sperrer

MILLIMETERS

Retraction Systems, Retractors, Hooks – Sperrersysteme, Spreizer und Wundhaken

Special Retractors

Spezialhaken

Dimensions for blade size of retractors

1st number = depth Example: 25 x 38 mm

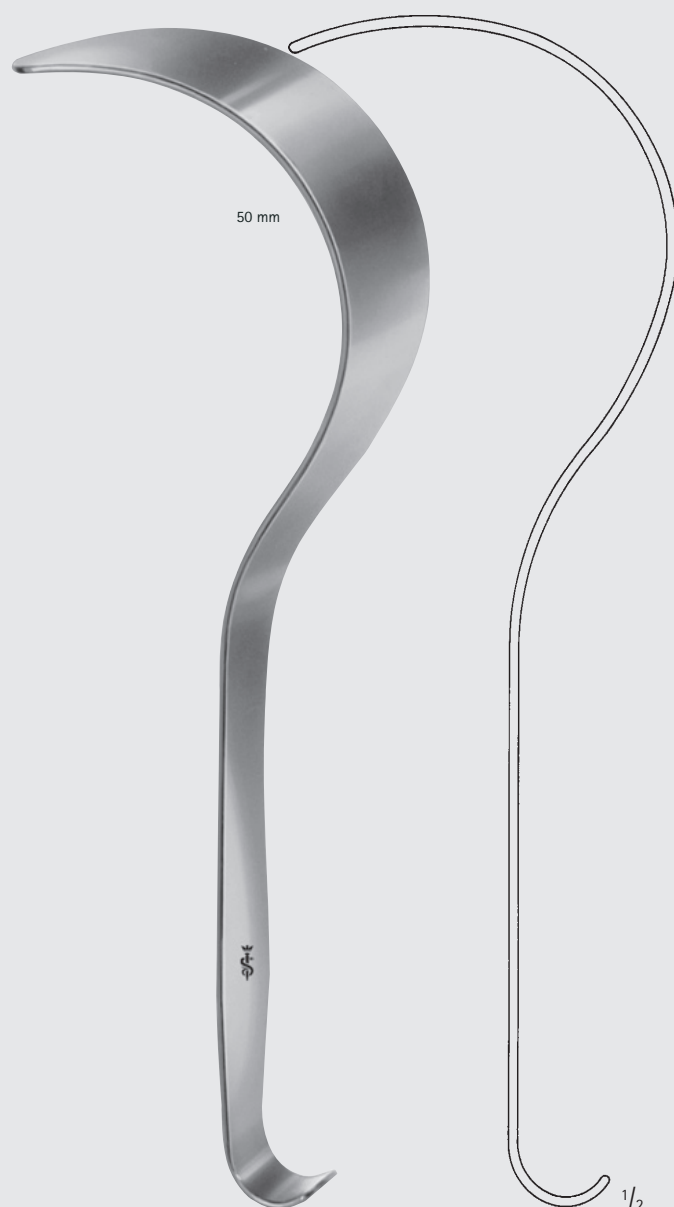
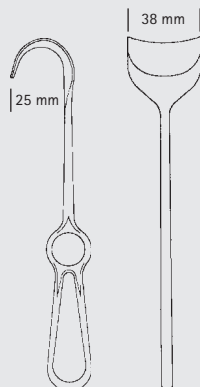
2nd number = width

Maßangaben für Blattgrößen der Wundhaken

1. Zahl = Tiefe

Beispiel: 25 x 38 mm

2. Zahl = Breite

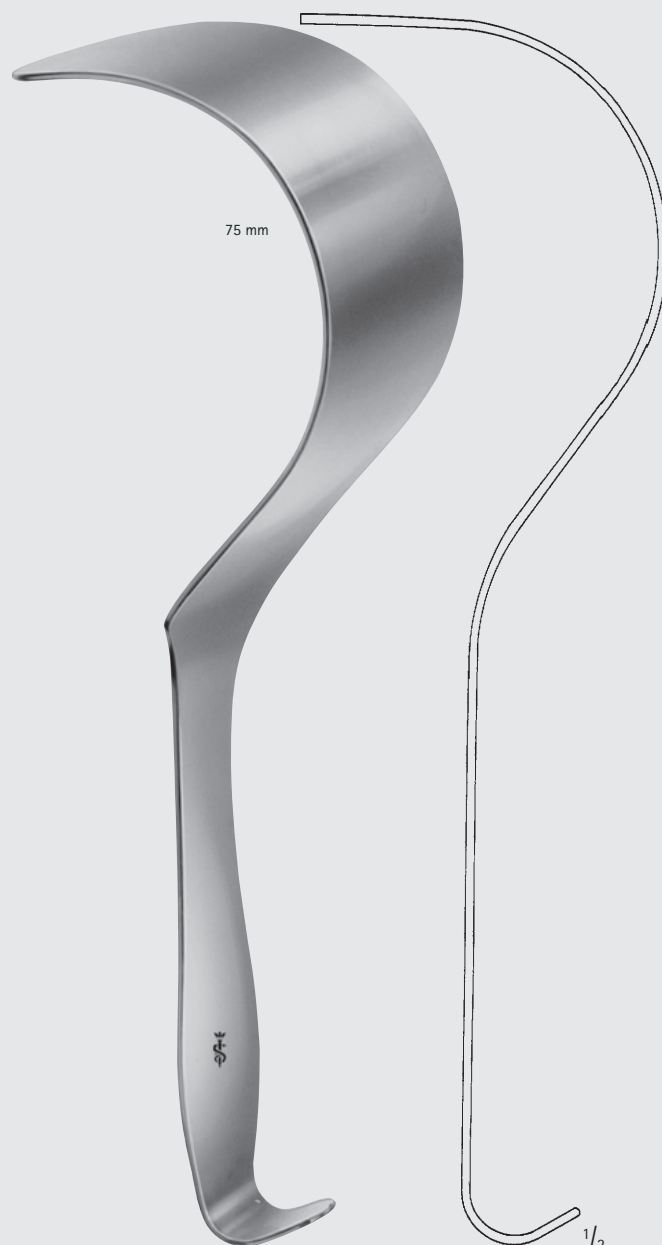


DEAYER

BT605R

Fig. 4

310 mm, 12 1/4"



DEAYER

BT608R

Fig. 5

320 mm, 12 3/4"



Retraction Systems, Retractors, Hooks – Sperrersysteme, Spreizer und Wundhaken

Special Retractors Spezialhaken



DEAVER

BT611R

Fig. 1
310 mm, 12 1/4"



DEAVER

BT613R

Fig. 3
310 mm, 12 1/4"



Retraction Systems, Retractors, Hooks – Sperrersysteme, Spreizer und Wundhaken

Special Retractors

Spezialhaken

Dimensions for blade size of retractors

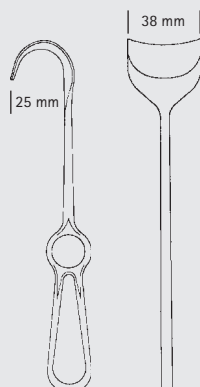
1st number = depth Example: 25 x 38 mm

2nd number = width

Maßangaben für Blattgrößen der Wundhaken

1. Zahl = Tiefe Beispiel: 25 x 38 mm

2. Zahl = Breite



DEAVER

BT614R

Fig. 4

305 mm, 12"



DEAVER

BT615R

Fig. 5

310 mm, 12 1/4"



Retraction Systems, Retractors, Hooks – Sperrersysteme, Spreizer und Wundhaken

Special Retractors

Spezialhaken



LERICHE

BT730R

255 mm, 10"



LERICHE

BT732R

275 mm, 10 ³/₄"

Retractors
Sperrer

MILLIMETERS

Retraction Systems, Retractors, Hooks – Sperrersysteme, Spreizer und Wundhaken

Aorta, Valve and Atrium Retractors

Aorta-, Klappen- und Atriumhaken

Dimensions for blade size of retractors

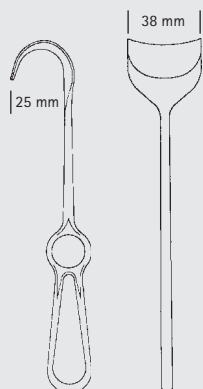
1st number = depth Example: 25 x 38 mm

2nd number = width

Maßangaben für Blattgrößen der Wundhaken

1. Zahl = Tiefe Beispiel: 25 x 38 mm

2. Zahl = Breite



15 x 15 mm



MB047R

Fig. 1

13 x 22 mm



MB048R

Fig. 2

17 x 24 mm



MB700R

Fig. 3

13 x 27 mm



MB701R

Fig. 4

30 x 28 mm



MB702R

Fig. 5

40 x 25 mm



MB703R

Fig. 6

ROSS

MB047R-MB703R

Aortic hooks

Aortahaken

255 mm, 10"



1/2

1/1



Retraction Systems, Retractors, Hooks – Sperrersysteme, Spreizer und Wundhaken

Aorta, Valve and Atrium Retractors

Aorta-, Klappen- und Atriumhaken



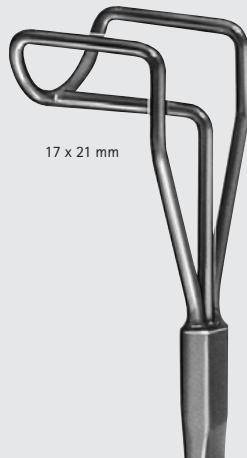
BOROWSKI

FB971R-FB976R

Shaft malleable

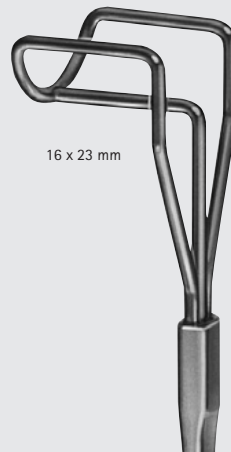
Schaft biegsam

270 mm, 10 $\frac{3}{4}$ "



17 x 21 mm

FB971R



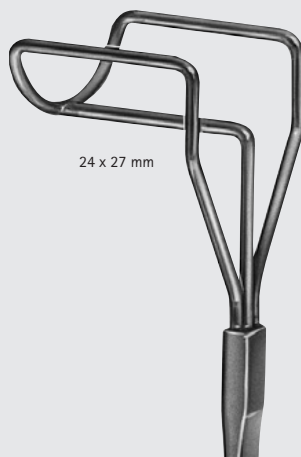
16 x 23 mm

FB972R



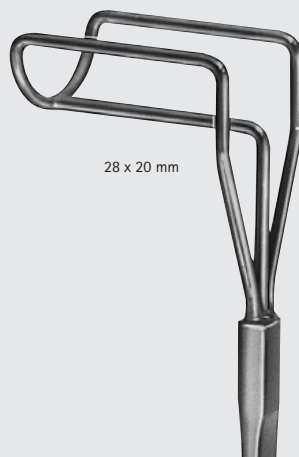
20 x 25 mm

FB973R



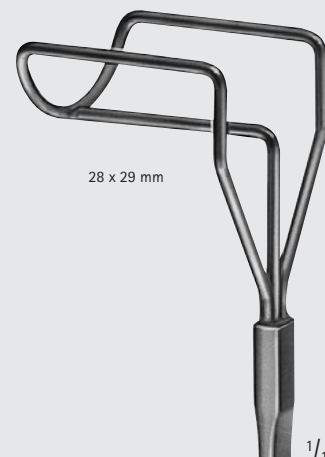
24 x 27 mm

FB974R



28 x 20 mm

FB975R



28 x 29 mm

FB976R

Retractors
Sperrer

MILLIMETERS

Retraction Systems, Retractors, Hooks – Sperrersysteme, Spreizer und Wundhaken

Aorta, Valve and Atrium Retractors

Aorta-, Klappen- und Atriumhaken

Dimensions for blade size of retractors

1st number = depth Example: 25 x 38 mm

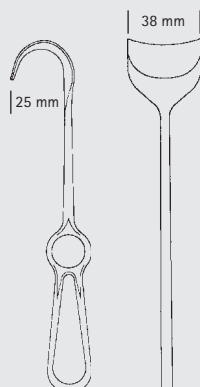
2nd number = width

Maßangaben für Blattgrößen der Wundhaken

1. Zahl = Tiefe

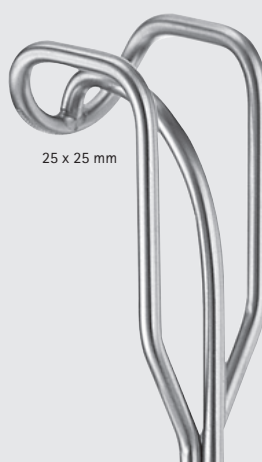
Beispiel: 25 x 38 mm

2. Zahl = Breite



25 x 20 mm

FB923R



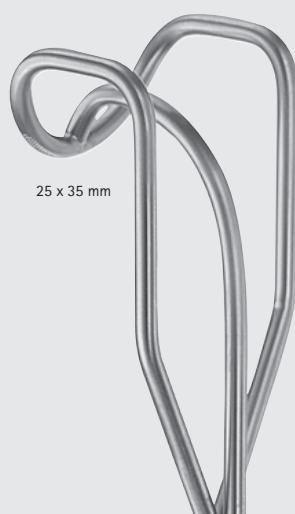
25 x 25 mm

FB924R



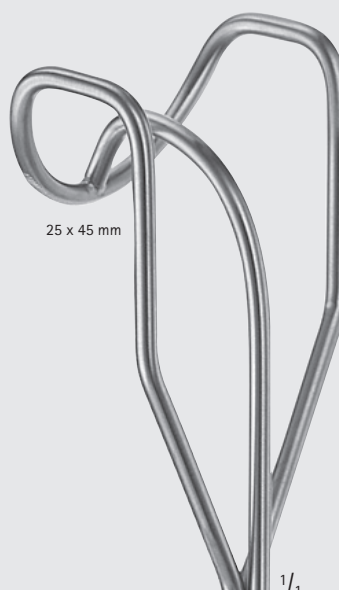
25 x 30 mm

FB925R



25 x 35 mm

FB926R



25 x 45 mm

FB927R



1/2

COOLEY

FB923R-FB927R

left

links

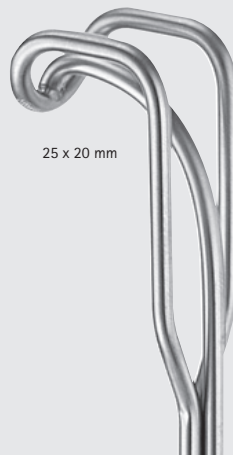
245 mm, 9 3/4"



Retraction Systems, Retractors, Hooks – Sperrersysteme, Spreizer und Wundhaken

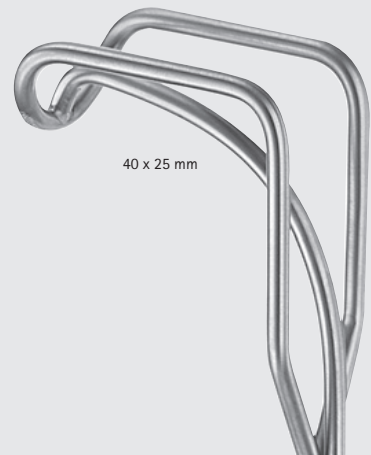
Aorta, Valve and Atrium Retractors

Aorta-, Klappen- und Atriumhaken



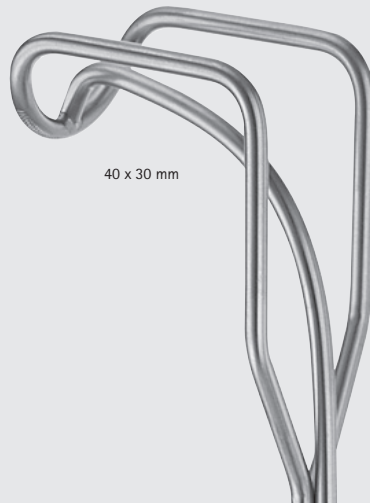
25 x 20 mm

FB963R



40 x 25 mm

FB964R



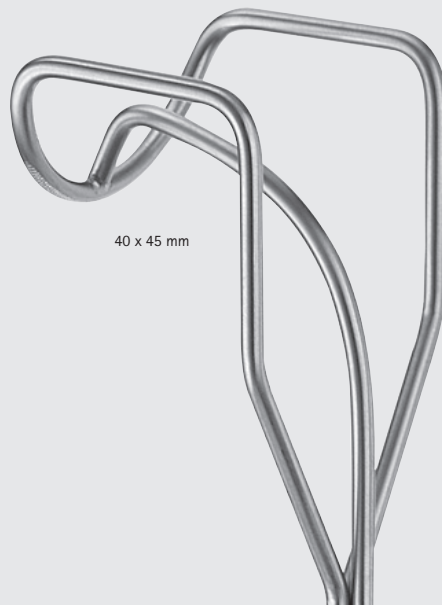
40 x 30 mm

FB965R



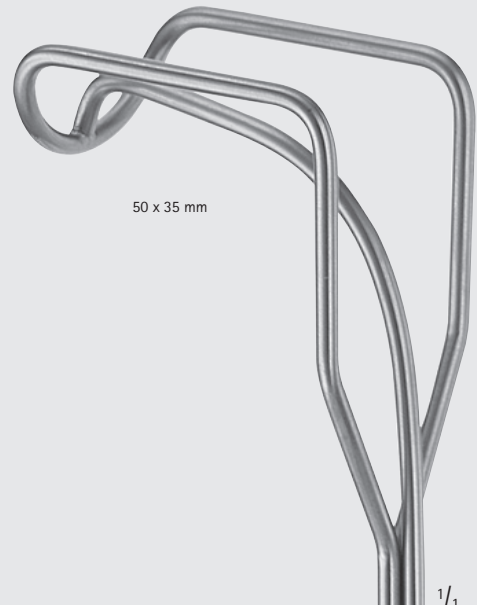
40 x 35 mm

FB966R



40 x 45 mm

FB967R



50 x 35 mm

FB968R



COOLEY

FB963R-FB968R

right
rechts

235 mm, 9 1/4"

Retractors
Sperrer

MILLIMETERS

Retraction Systems, Retractors, Hooks – Sperrersysteme, Spreizer und Wundhaken

Aorta, Valve and Atrium Retractors

Aorta-, Klappen- und Atriumhaken

Dimensions for blade size of retractors

1st number = depth Example: 25 x 38 mm

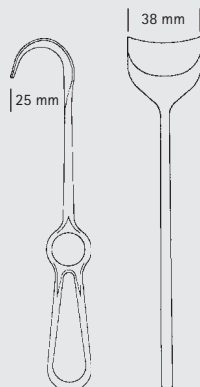
2nd number = width

Maßangaben für Blattgrößen der Wundhaken

1. Zahl = Tiefe

Beispiel: 25 x 38 mm

2. Zahl = Breite



COOLEY

FB860R

right

rechts

270 mm, 10 $\frac{3}{4}$ "



COOLEY

FB861R

right, slightly serrated

rechts, leicht gezahnt

270 mm, 10 $\frac{3}{4}$ "



COOLEY

FB862R

left

links

280 mm, 11"



Retraction Systems, Retractors, Hooks – Sperrersysteme, Spreizer und Wundhaken

Aorta, Valve and Atrium Retractors

Aorta-, Klappen- und Atriumhaken



COOLEY MODIF. STRUCK

FB865R

slightly serrated

leicht gezahnt

265 mm, 10 1/2"



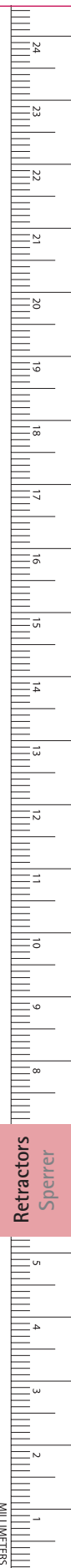
COOLEY MODIF. STRUCK

FB866R

slightly serrated

leicht gezahnt

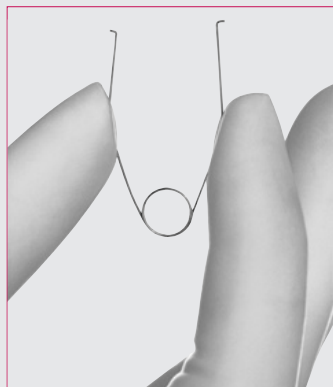
265 mm, 10 1/2"



Retraction Systems, Retractors, Hooks – Sperrersysteme, Spreizer und Wundhaken

Self-Retaining Retractors, Small

Wundspreizer, klein



Extremely small coronary retractor

■ No handle, therefore:

- Occupies a minimal amount of space
- No risk of suture getting caught

■ Indications:

- Coronary surgery in cases of minimized access
- Standard coronary surgery

Extrem kleiner Fettspreizer

■ Keine Griffe, dadurch:

- Extrem geringer Platzbedarf
- Kein Risiko des Verfangens von Nahtmaterial

■ Indikationen:

- Koronarchirurgie bei minimiertem Zugang
- Standard Koronarchirurgie



BV009R

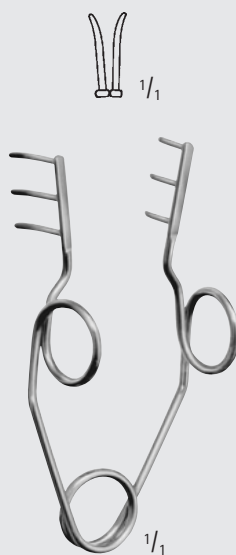
Coronary retractor

Koronar Fettspreizer



BV006R

45 mm, 1 ³/₄ "



BV007R

55 mm, 2 ¹/₈ "



Retraction Systems, Retractors, Hooks – Sperrersysteme, Spreizer und Wundhaken

Self-Retaining Retractors, Small Wundspreizer, klein

I.M.A. Epicardial retractors
for Coronary Artery Bypass Grafting

I.M.A. Epikard-Retractor
für die Koronararterien-Bypass-Chirurgie

Mini



BV021R

25 mm, 1"

Small



BV022R

32 mm, 1 1/4"

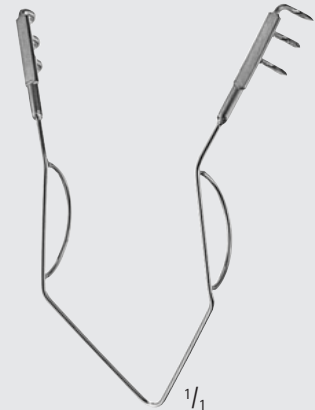
Medium



BV023R

40 mm, 1 1/2"

Large



BV024R

52 mm, 2"



PARSONNET

BV014R

sharp



scharf

50 mm, 2"



ALM

BV010R-BV011R

	
BV010R	BV011R
70 mm	100 mm
2 3/4"	4"

Retraction Systems, Retractors, Hooks – Sperrersysteme, Spreizer und Wundhaken

Self-Retaining Retractors, Small

Wundspreizer, klein



ALLPORT

BV028R

95 mm, 3 ³/₄"



JANSEN

BV030R

100 mm, 4"



JANSEN

BV032R

100 mm, 4"



JANSEN

BV033R

100 mm, 4"



BARRAQUER

OA200R

45 mm, 1 ³/₄"

Retraction Systems, Retractors, Hooks – Sperrersysteme, Spreizer und Wundhaken

Vascular Self-Retaining Retractors

Gefäß-Wundspreizer

- Retractor system for optimal approach to the arteria iliaca communis.
- The retractor blades are made out of titanium and therefore they are radiotransparent.
- The big medial retractor blade can be gradually adjusted during the operation.
- Because of the blades which are easy to exchange the retractor system can be used for the left and the right side.
- Sperrersystem zur idealen Darstellung der Arteria iliaca communis.
- Die Retraktorblätter sind aus Titan gefertigt und sind dadurch röntgentransparent.
- Das große mediale Retraktorblatt kann intraoperativ stufenweise verstellt werden.
- Das Sperrersystem kann aufgrund der einfachen Auswechselbarkeit der Valven links- sowie rechtsseitig eingesetzt werden.



BV712T
30 x 30 mm



BV713T
90 x 60 mm



BV709R
Forceps for changing the blades
Pinzette zum Valvenwechsel
130 mm, 5 1/8"

ALLENBERG

BV710R

Iliac retractor complete, consisting of:

- BV711R Retractor only
- BV712T Retractor blade lateral
- BV713T Retractor blade medial

Iliaca-Sperrer komplett, bestehend aus:

- BV711R Sperrer allein
- BV712T Retraktorblatt lateral
- BV713T Retraktorblatt medial

Retraction Systems, Retractors, Hooks – Sperrersysteme, Spreizer und Wundhaken

Vascular Self-Retaining Retractors

Gefäß-Wundspreizer



ALLENBERG

BV097R

Carotid retractor complete,
consisting of:

- BV098R Retractor only, blunt,
170 mm, 6 $\frac{3}{4}$ "
- BV099R Center blade only,
120 mm, 4 $\frac{3}{4}$ "

Carotis-Sperrer komplett,
bestehend aus:

- BV098R Sperrer allein, stumpf,
170 mm, 6 $\frac{3}{4}$ "
- BV099R Mittelblatt allein,
120 mm, 4 $\frac{3}{4}$ "



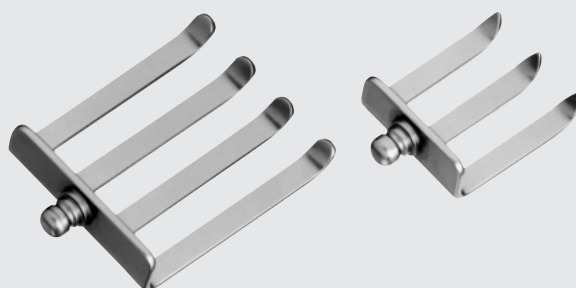
BV349R

Poplitea retractor, complete
consisting of:

- BV327R Retractor only
- BV348R Blades (pair)

Poplitea-Sperrer, komplett
bestehend aus:

- BV327R Sperrer allein
- BV348R Blätter (Paar)



BV348R

Blades (pair), only
consisting of:

- Blade, blunt, 60 x 50 mm
- Blade, semi-sharp, 40 x 35 mm

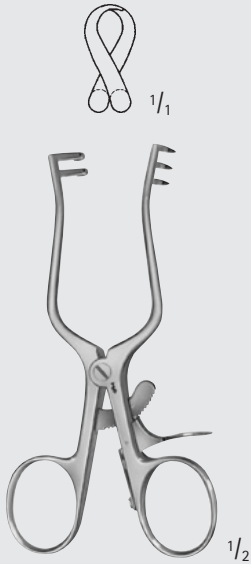
Blätter (Paar), allein
bestehend aus:

- Blatt, stumpf, 60 x 50 mm
- Blatt, halbscharf, 40 x 35 mm



Retraction Systems, Retractors, Hooks – Sperrersysteme, Spreizer und Wundhaken

Self-Retaining Retractors, Large
Wundspreizer, groß



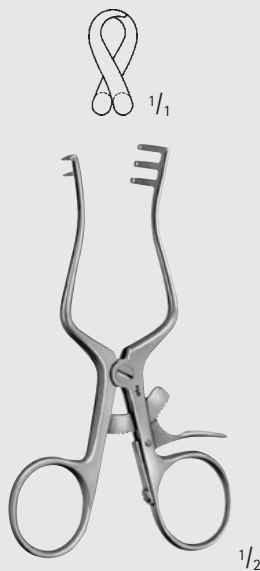
WEITLANER

BV070R

sharp

scharf

110 mm, 4 $\frac{3}{8}$ "



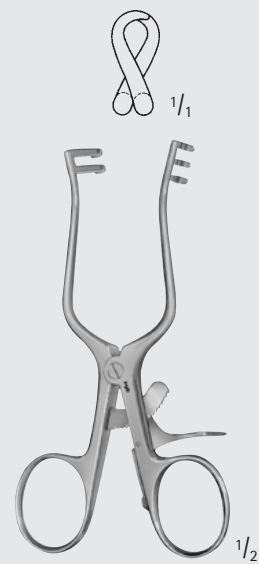
WEITLANER

BV066R

semi-sharp

halbscharf

110 mm, 4 $\frac{3}{8}$ "



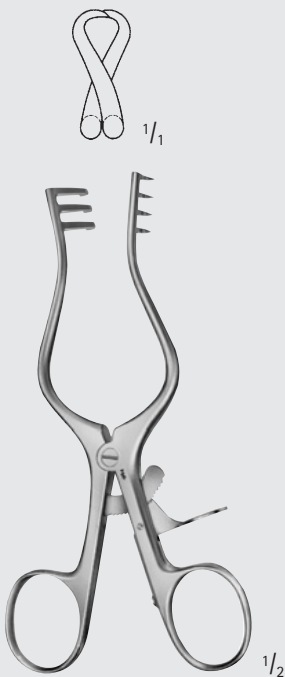
WEITLANER

BV073R

blunt

stumpf

110 mm, 4 $\frac{3}{8}$ "



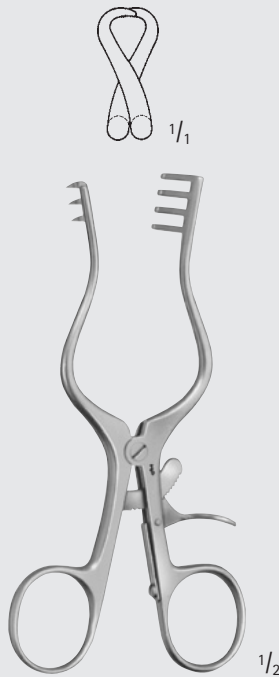
WEITLANER

BV071R

sharp

scharf

130 mm, 5 $\frac{1}{8}$ "



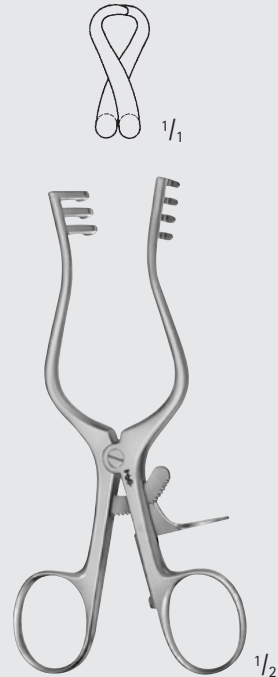
WEITLANER

BV067R

semi-sharp

halbscharf

130 mm, 5 $\frac{1}{8}$ "



WEITLANER

BV074R

blunt

stumpf

130 mm, 5 $\frac{1}{8}$ "

Retractors
Sperrer

MILLIMETERS

Retraction Systems, Retractors, Hooks – Sperrersysteme, Spreizer und Wundhaken

Self-Retaining Retractors, Large Wundspreizer, groß



WEITLANER

BV101R

sharp

scharf

130 mm, 5 1/8"



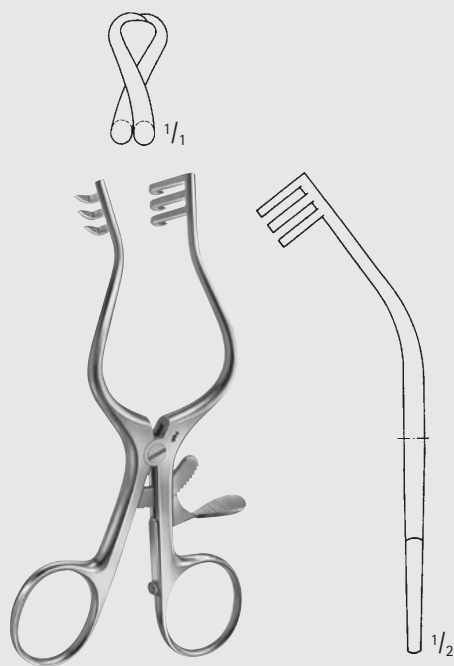
WEITLANER

BV104R

blunt

stumpf

130 mm, 5 1/8"



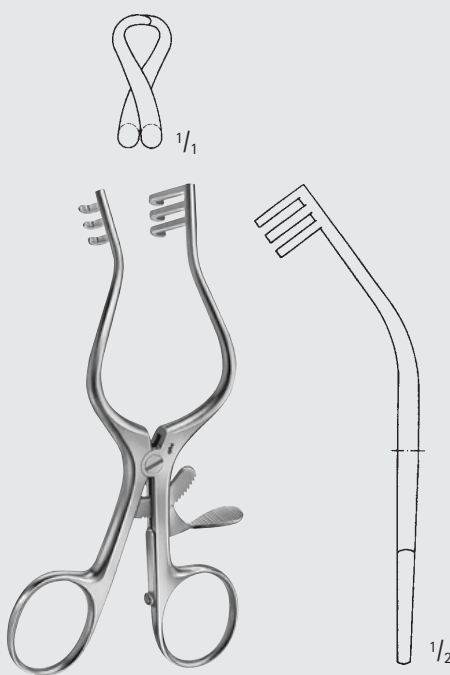
WULLSTEIN

BV076R

sharp

scharf

130 mm, 5 1/8"



WULLSTEIN

BV077R

blunt

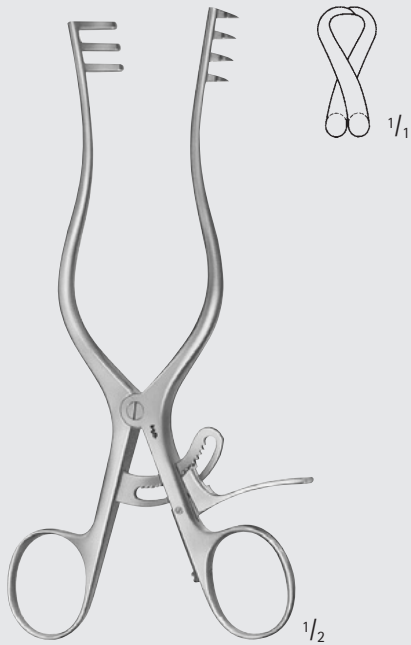
stumpf

130 mm, 5 1/8"



Retraction Systems, Retractors, Hooks – Sperrersysteme, Spreizer und Wundhaken

Self-Retaining Retractors, Large
Wundspreizer, groß



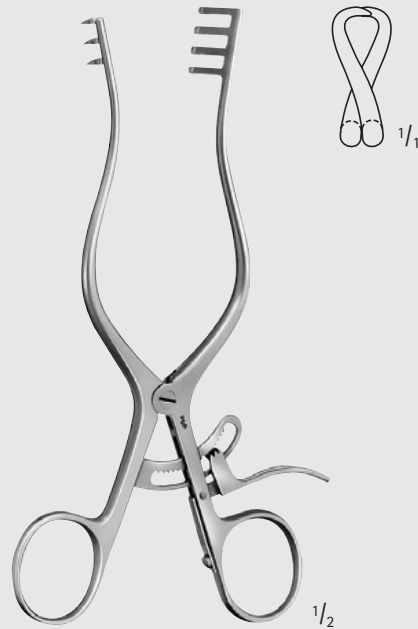
WEITLANER

BV072R

sharp

scharf

165 mm, 6 1/2"



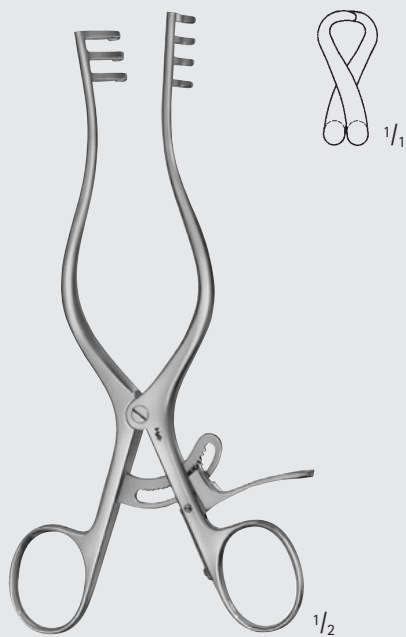
WEITLANER

BV068R

semi-sharp

halbscharf

165 mm, 6 1/2"



WEITLANER

BV075R

blunt

stumpf

165 mm, 6 1/2"

Retractors
Sperrer

MILLIMETERS

Retraction Systems, Retractors, Hooks – Sperrersysteme, Spreizer und Wundhaken

Self-Retaining Retractors, Large

Wundspreizer, groß

HENLY

BV120R

Retractor set complete,
consisting of:

Center blade 18 x 16 mm

Center blade 25 x 16 mm

Center blade 30 x 16 mm

Center blade 74 x 16 mm

Lateral blades (pair) 27 x 22 mm

Lateral blades (pair) 52 x 22 mm

Lateral blades (pair) 77 x 22 mm

Wundspreizer-Set komplett,
bestehend aus:

Mittelblatt 18 x 16 mm

Mittelblatt 25 x 16 mm

Mittelblatt 30 x 16 mm

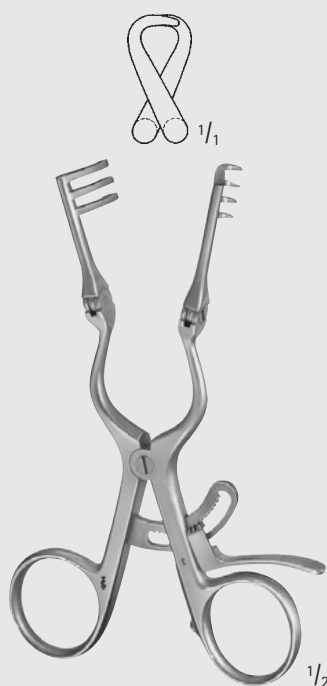
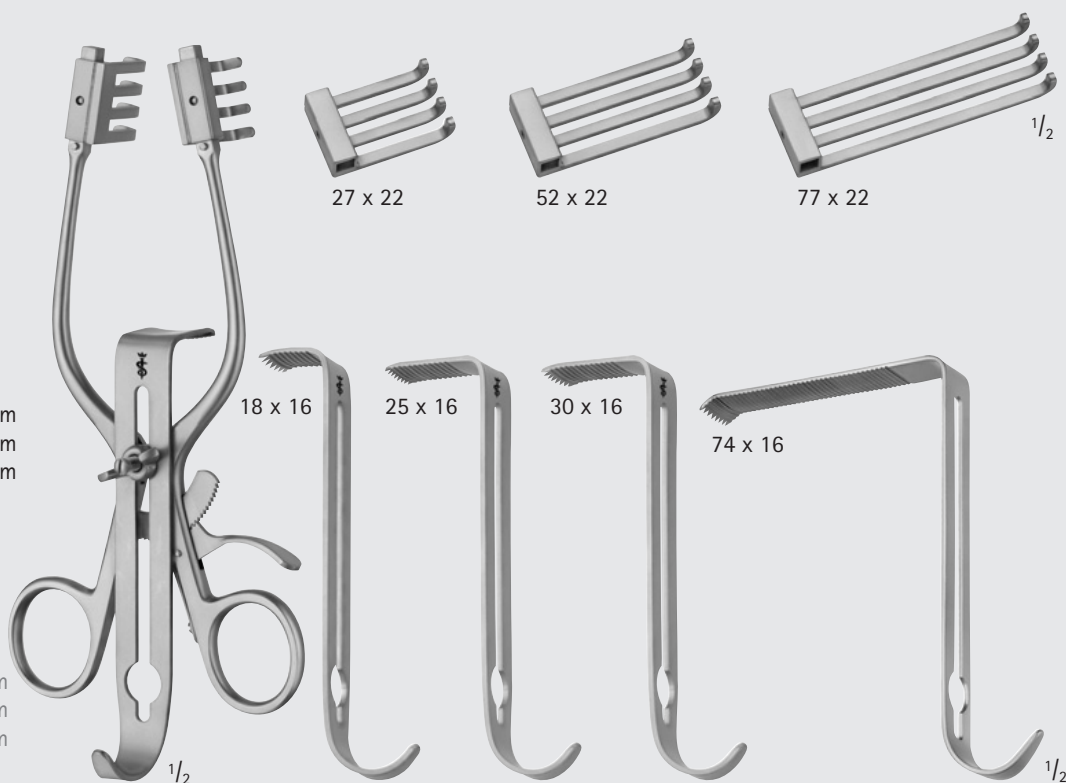
Mittelblatt 74 x 16 mm

Seitl. Blätter (Paar) 27 x 22 mm

Seitl. Blätter (Paar) 52 x 22 mm

Seitl. Blätter (Paar) 77 x 22 mm

180 mm, 7"



ADSON-BABY

BV085R 140 mm, 5 1/2"

BV094R 165 mm, 6 1/2"

semi-sharp

halbscharf



ADSON

BV251R

semi-sharp

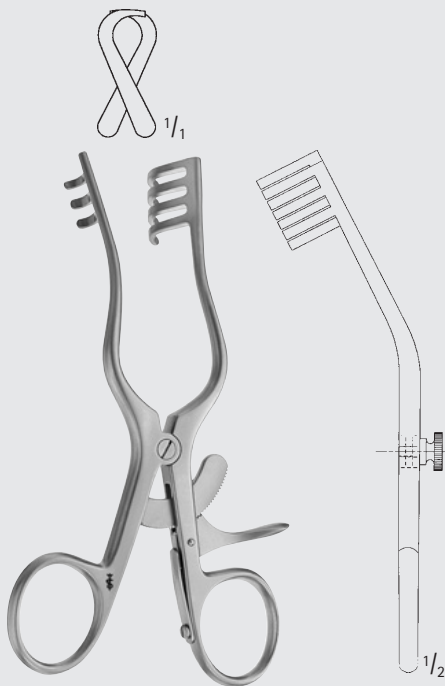
halbscharf

215 mm, 8 1/2"



Retraction Systems, Retractors, Hooks – Sperrersysteme, Spreizer und Wundhaken

Self-Retaining Retractors, Large
Wundspreizer, groß



JEFFERSON

BV092R

curved, blunt

gebogen, stumpf

140 mm, 5 1/2"



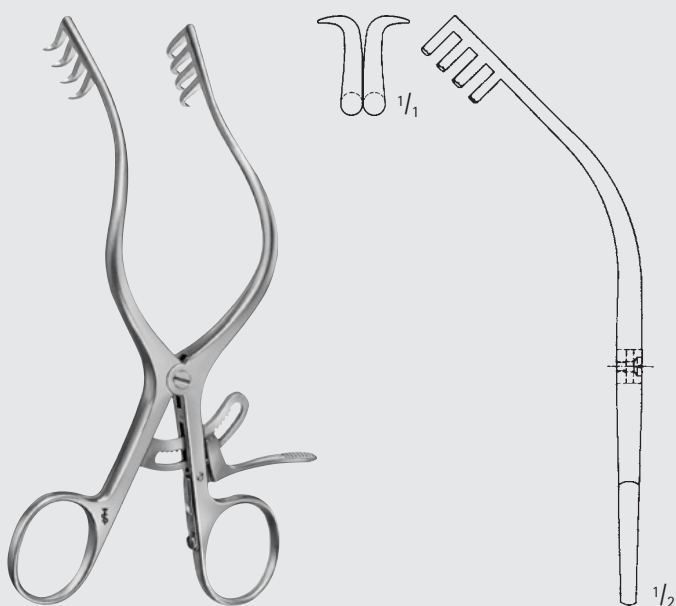
MOLLISON

BV093R

sharp

scharf

140 mm, 5 1/2"



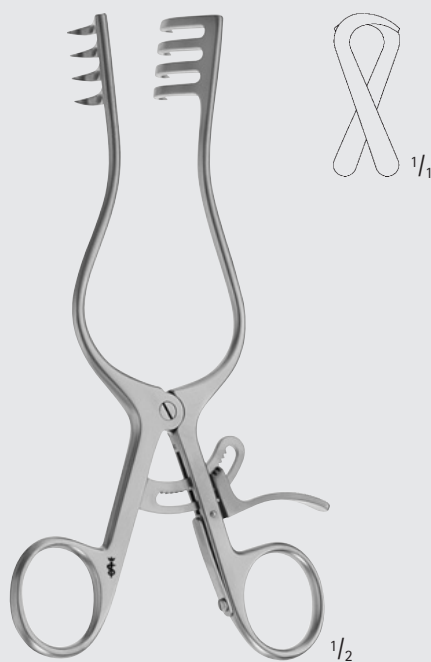
MOLLISON

BV088R

sharp

scharf

155 mm, 6"



HENDERSON

BV113R

sharp

scharf

180 mm, 7"

Retractors
Sperrer

MILLIMETERS

Retraction Systems, Retractors, Hooks – Sperrersysteme, Spreizer und Wundhaken

Self-Retaining Retractors, Large Wundspreizer, groß



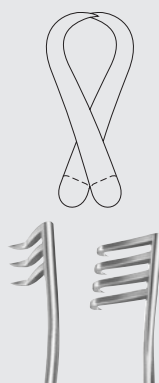
WEITLANER

BV199R-BV209R



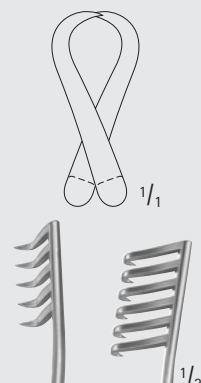
BV200R

sharp
scharf
195 mm
7 ³/₄"



BV206R

sharp
scharf
240 mm
9 ¹/₂"



BV208R

sharp
scharf
255 mm
10"



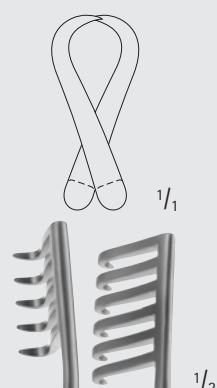
BV199R

semi-sharp
halbscharf
195 mm
7 ³/₄"



BV203R

semi-sharp
halbscharf
240 mm
9 ¹/₂"



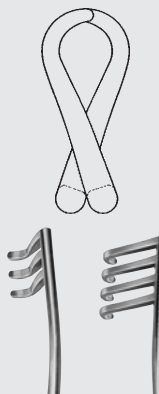
BV205R

semi-sharp
halbscharf
255 mm
10"



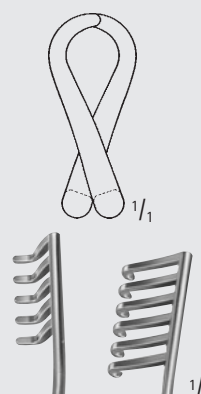
BV201R

blunt
stumpf
195 mm
7 ³/₄"



BV207R

blunt
stumpf
240 mm
9 ¹/₂"



BV209R

blunt
stumpf
255 mm
10"



Retraction Systems, Retractors, Hooks – Sperrersysteme, Spreizer und Wundhaken

Self-Retaining Retractors, Large
Wundspreizer, groß



IRWIN

BV247R

sharp

scharf

175 mm, 7"



TRAVERS

BV249R

blunt

stumpf

215 mm, 8 1/2"

Retractors
Sperrer

MILLIMETERS

Abdominal aortic aneurysm

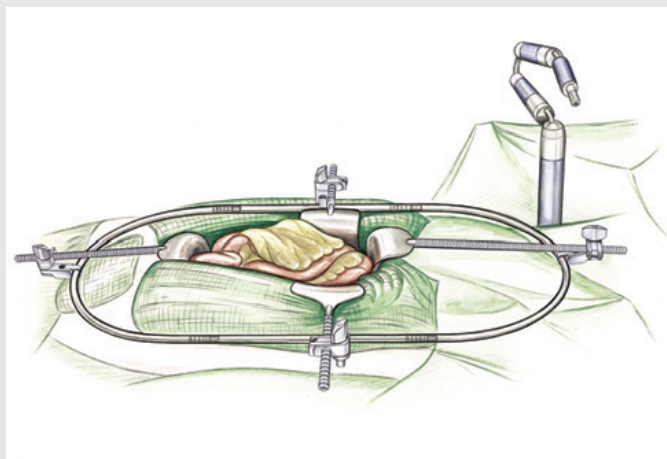
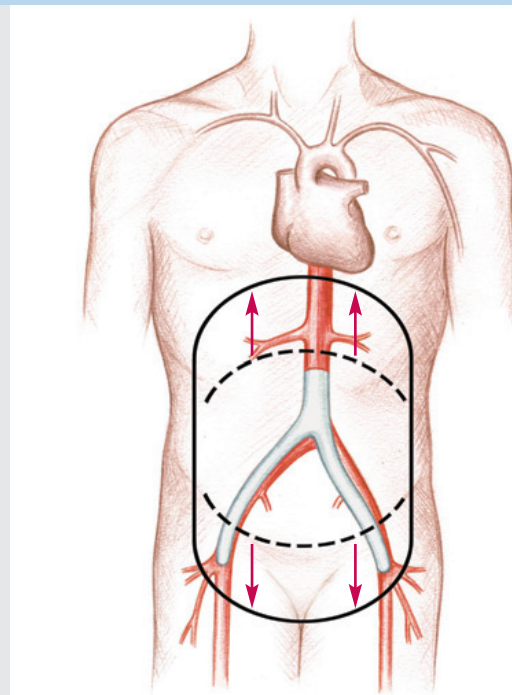
Abdominales Aortenaneurysma

In the case of abdominal aortic aneurysm, the Aesculap Retraction System offers optimum visibility to the operating field.

Thanks to its modular design, the Aesculap Ring System can be individually adapted to the anatomical situation of the patient. The frames and retractors can be adjusted to the required dimensions with extensions of different lengths. For example, the abdominal ring of the system can be extended by means of ring extensions, which allows the creation of additional space in the cranial and caudal direction, e. g. in case of implantation of a Y-prosthesis for the treatment of an aneurysm. The system provides enough space for the aneurysm treatment as well as for the distal anastomosis.

Beim abdominalen Aortenaneurysma ermöglichen die Aesculap Retraktionssysteme eine optimierte Darstellung des Operationsfeldes.

Das Aesculap Ring System kann aufgrund seiner modularen Konzeption individuell an die anatomische Situation des Patienten angepasst werden. Die Rahmen und Wundhaken lassen sich mit Verlängerungen in unterschiedlichen Längen auf das gewünschte Maß einstellen. So kann beispielsweise der Abdominalring des Systems durch entsprechende Ringverlängerungen verlängert werden, dass kranial und kaudal z.B. beim Einsatz einer Y-Prothese ausreichend Raum für die Behandlung des Aneurysmas sowie Zugang bei den distalen Anastomosen geschaffen wird.



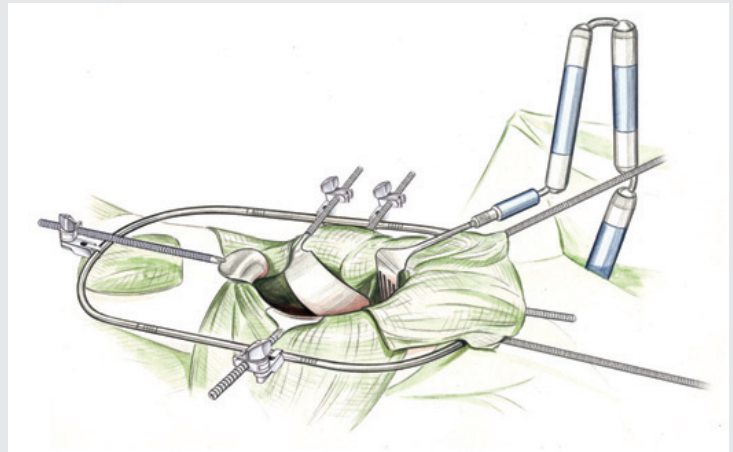
Retraction Systems, Retractors, Hooks – Sperrersysteme, Spreizer und Wundhaken

Aesculap Retraction Systems in Vascular Surgery

Aesculap Retraktionssysteme in der Gefäßchirurgie

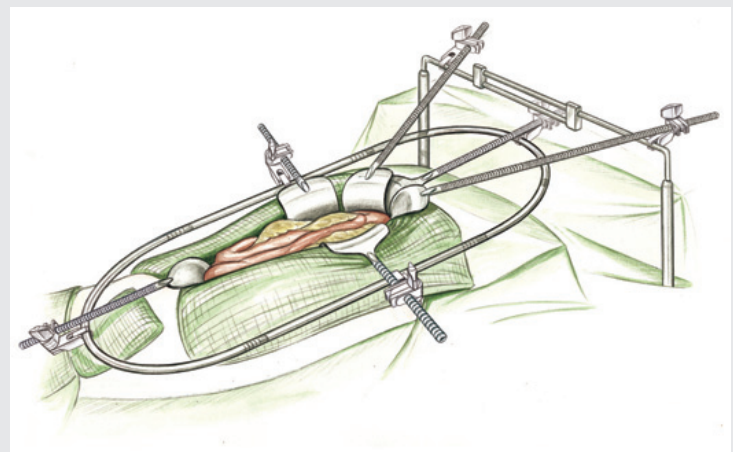
The Unitrac® Arm serves as an "additional surgeon's arm" for the retraction of organs and soft tissue (intestine, stomach, etc.). With just one button to press for adjustment, the site can be optimally exposed by using the Unitrac® arm.

Der Unitrac® Arm wird als „zusätzlicher Arm des Chirurgen“ zur Retraktion von Organen und Weichgewebe (Darm, Magen, etc.) eingesetzt. Dank der einfachen Verstellbarkeit per Knopfdruck und der stabilen Retraktion kann der Situs mit dem Unitrac® optimal dargestellt werden.



Moreover, improved visibility of the site can also be achieved during interventions to the suprarenal aorta using the GNAUERT upper abdominal frame.

Zusätzlich kann mit dem Oberbauchrahmen nach GNAUERT, bei Eingriffen an der Aorta Suprarenalis eine verbesserte Darstellung des Situs erfolgen.



Retraction Systems, Retractors, Hooks – Sperrersysteme, Spreizer und Wundhaken

Aesculap Retraction Systems in Vascular Surgery

Aesculap Retraktionssysteme in der Gefäßchirurgie

Recommended set

	Cat. No.	Quantity	Description
1	BV815R	1	Abdominal frame II 328 x 270 mm
2	BV817R	1	Abdominal frame III 408 x 350 mm
3	BV819R	1	Frame extension rod 100 mm
4	BV821R	1	Frame extension rod 250 mm
5	BV825R	8	Round notch rod 150 mm
6	BV849R	8	Connecting clamp
7	BV839R	2	Octagonal. notch rod 120 mm
8	FG290R	1	Wrench 10 AF, angled
9	BV961R	4	Abdominal retractor blade, size I 62 x 76 mm
10	BV962R	4	Abdominal retractor blade, size II 80 x 80 mm
11	BV972R	2	Abdominal retractor blade 100 x 100 mm
12	BV973R	2	Abdominal retractor blade 100 x 120 mm
13	BV945R	4	Abdominal retractor blade 50 x 90 mm
14	BV946R	2	Abdominal retractor blade 50 x 105 mm
15	BV952R	3	Liver retractor 140 x 85 mm
16	BT625R	1	Liver retractor 125 x 140 mm
17	BV949R	1	Kelly retractor blade 150 x 39 mm

18	BV848R	1	GNAUERT frame for upper abdomen
19	BV826R	4	Extension notch rod 100 mm
20	BV835R	2	Adapter for KSV ball snap closure blades
21	BV555R	1	Retractor blades, pair 48 x 59 mm KSV
22	BV556R	1	Retractor blades, pair 58 x 80 mm KSV

23	RT040R	1	Unitrac® holding arm
24	RT090R	3	Fixation clamp for OR table rail
25	GA466	1	Compressed air hose Aesculap Dräger, 5 m
26	RT153R	1	Unitrac® Coryllos retractor blade 115 x 65 mm

Setempfehlung

	Art. Nr.	Menge	Beschreibung
1	BV815R	1	Abdominal Ring II 328 x 270 mm
2	BV817R	1	Abdominal Ring III 408 x 350 mm
3	BV819R	1	Ring-Verlängerungsstab 100 mm
4	BV821R	1	Ring-Verlängerungsstab 250 mm, gerade
5	BV825R	8	Runde Raststange 150 mm
6	BV849R	8	Befestigungsklemme
7	BV839R	2	Achtkantrostange, 120 mm, mit Kontermutter
8	FG290R	1	Spannschlüssel SW 10
9	BV961R	4	Bauchdeckenhaken Gr. I 62 x 76 mm
10	BV962R	4	Bauchdeckenhaken Gr. II 80 x 80 mm
11	BV972R	2	Bauchdeckenhaken 100 x 100 mm
12	BV973R	2	Bauchdeckenhaken 100 x 120 mm
13	BV945R	4	Bauchdeckenhaken 50 x 90 mm
14	BV946R	2	Bauchdeckenhaken 50 x 105 mm
15	BV952R	3	Leberhaken 140 x 85 mm
16	BT625R	1	Leberhaken 125 x 140 mm
17	BV949R	1	Wundhaken nach Kelly 150 x 39 mm

18	BV848R	1	GNAUERT Oberbauchrahmen
19	BV826R	4	Verlängerungsstück für Raststange 100 mm
20	BV835R	2	Kupplungsstück mit KSV Ansatz
21	BV555R	1	Blätter Paar 48 x 59 mm KSV
22	BV556R	1	Blätter Paar 58 x 80 mm KSV

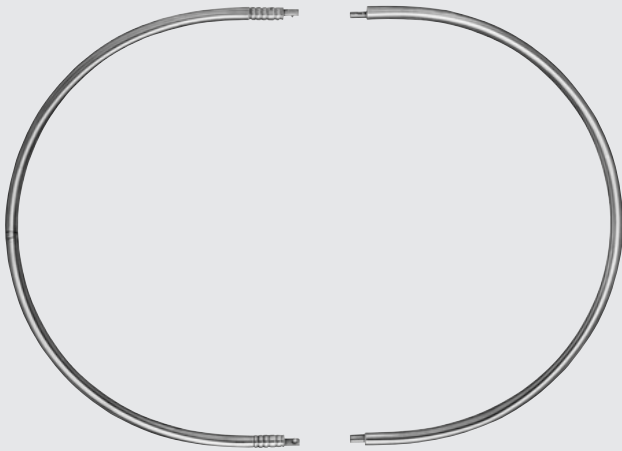
23	RT040R	1	Unitrac® Haltearm
24	RT090R	3	Haltekolben zur Befestigung an der OP Tisch Schiene
25	GA466	1	Druckluftschlauch Aesculap Dräger, 5 m
26	RT153R	1	Unitrac® Wundhaken Coryllos 115 x 65 mm



Retraction Systems, Retractors, Hooks – Sperrersysteme, Spreizer und Wundhaken

Aesculap Retraction Systems in Vascular Surgery

Aesculap Retraktionssysteme in der Gefäßchirurgie



BV814R 238 x 180 mm
Abdominal frame I, detachable
Abdominalring I, teilbar

1 BV815R 328 x 270 mm
Abdominal frame II, detachable
Abdominalring II, teilbar

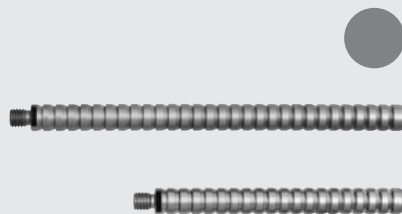
2 BV817R 408 x 350 mm
Abdominal frame III, detachable
Abdominalring III, teilbar



3 BV819R 100 mm
Frame extension rod, (1 Pair)
Ring-Verlängerungsstange, (1 Paar)



4 BV821R 250 mm
Frame extension rod, (1 Pair)
Ring-Verlängerungsstange, (1 Paar)

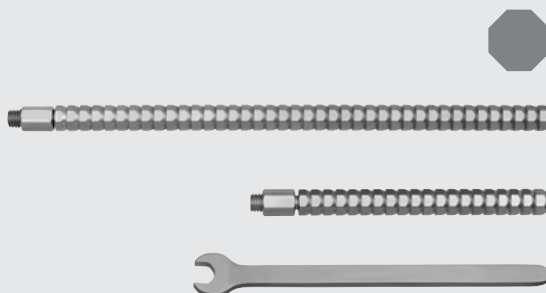


Round notch rods
Runde Raststangen

5 BV825R 150 mm

19 BV826R 100 mm

Extension notch rod
Verlängerungsstück



Octangular notch rods
Achtkant-Raststangen

BV840R 220 mm

7 BV839R 120 mm

8 FG290R Wrench for locking retractor blades
on BV839R and BV840R
Schlüssel zum Sichern von Wundhaken
auf BV839R und BV840R

Retraction Systems, Retractors, Hooks – Sperrersysteme, Spreizer und Wundhaken

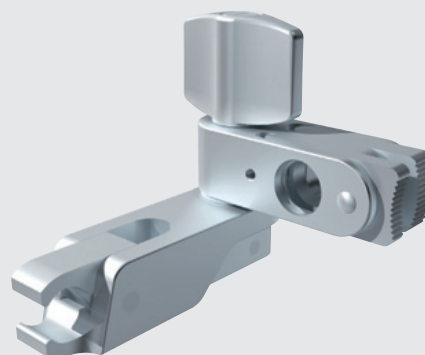
Aesculap Retraction Systems in Vascular Surgery

Aesculap Retraktionssysteme in der Gefäßchirurgie



20 BV835R

Adapter for retractor blades with ball snap closure (KSV)
Kupplungsstück für KSV-Wundhaken

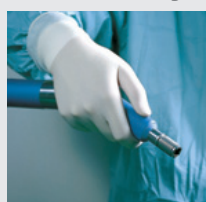


6 BV849R

Connecting clamp, with latching mechanism
for octagonal notch rods.
Suitable for round and octagonal notch rods
Befestigungsklemme, mit Arretierungsfunktion
für Achtkant-Raststangen.
Geeignet für runde und Achtkant-Raststangen



One-hand-use
Einhandbedienung

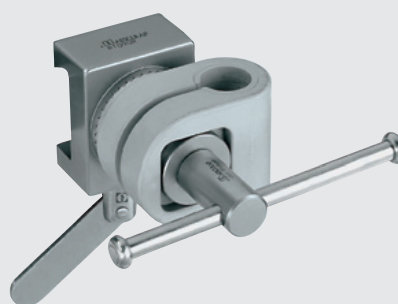


23 RT040R

Unitrac®-Arm, 74 cm long, 4 kg holding force
Unitrac®-Arm, 74 cm Länge, 4 kg Haltekraft

25 GA466

Compressed air hose Aesculap Dräger, 5 m
Druckluftschlauch Aesculap Dräger, 5 m



24 RT090R

Connection to the OR table rail,
9-10 cm width, 25-35 cm length
Adapter für OP-Schiene,
9-10 cm Breite, 25-35 cm Länge

Retraction Systems, Retractors, Hooks – Sperrsysteme, Spreizer und Wundhaken

Aesculap Retraction Systems in Vascular Surgery

Aesculap Retraktionssysteme in der Gefäßchirurgie

GNAUERT Frame for upper abdomen GNAUERT Oberbauchrahmen

- 18** **BV848R** GNAUERT Frame for upper abdomen,
consisting of: 1 Frame (horizontal)
2 Vertical rods

Additionally required (please order separately):
2 RT090R
Connecting clamps

GNAUERT Oberbauchrahmen,
bestehend aus: 1 Rahmen (horizontal)
2 senkrechte Stangen

Zusätzlich werden 2 RT090R Adapter benötigt
(nicht in BV848R enthalten, bitte zusätzlich bestellen)



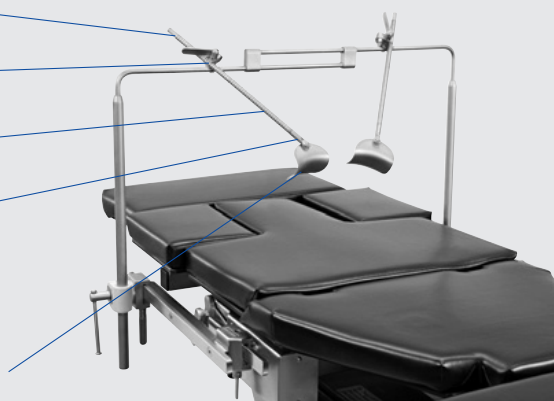
- BV827R** Notch rod end part
Raststangenendstück

- 6** **BV849R** 2 Clamps
2 Klemmen

Round notch rods (BV825R)
Runde Raststangen (BV825R)

- 20** **BV835R** Adapter piece
Kupplungsstück

Retractor blades
(recommended) **21** **BV555R** **22** **BV556R**
Wundhaken
(Empfehlung:) **21** **BV555R** **22** **BV556R**

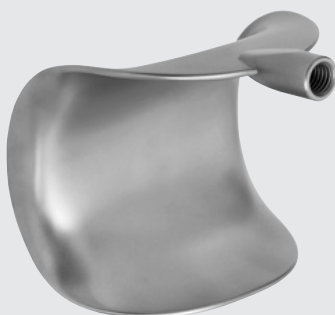


Set up example
Montagebeispiel

Retraction Systems, Retractors, Hooks – Sperrersysteme, Spreizer und Wundhaken

Aesculap Retraction Systems in Vascular Surgery

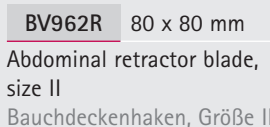
Aesculap Retraktionssysteme in der Gefäßchirurgie



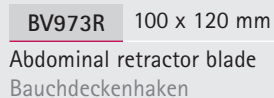
9 **BV961R** 62 x 76 mm
Abdominal retractor blade,
size I
Bauchdeckenhaken, Größe I



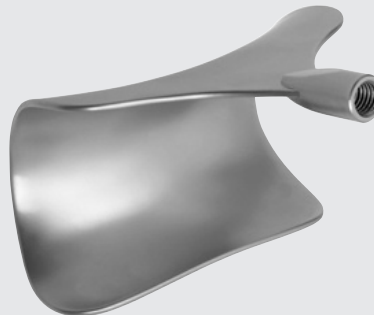
11 **BV972R** 100 x 100 mm
Abdominal retractor blade,
Bauchdeckenhaken



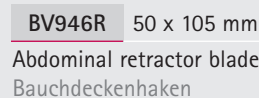
10 **BV962R** 80 x 80 mm
Abdominal retractor blade,
size II
Bauchdeckenhaken, Größe II



12 **BV973R** 100 x 120 mm
Abdominal retractor blade
Bauchdeckenhaken



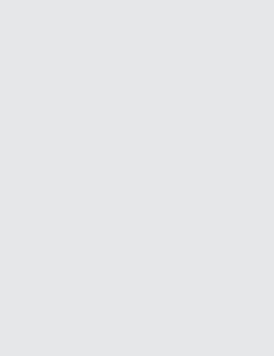
13 **BV945R** 50 x 90 mm
Abdominal retractor blade
Bauchdeckenhaken



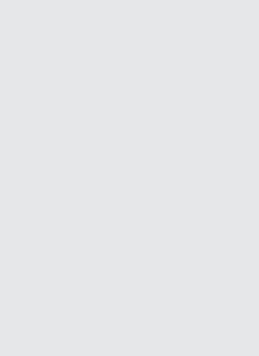
14 **BV946R** 50 x 105 mm
Abdominal retractor blade
Bauchdeckenhaken



21 **BV555R** 48 x 59 mm
Retractor blades (Pair), KSV
Blätter (Paar), KSV



22 **BV556R** 58 x 80 mm
Retractor blades (Pair), KSV
Blätter (Paar), KSV



BV557R 72 x 84 mm
Retractor blades (Pair), KSV
Blätter (Paar), KSV



Retraction Systems, Retractors, Hooks – Sperrersysteme, Spreizer und Wundhaken

Aesculap Retraction Systems in Vascular Surgery
Aesculap Retraktionssysteme in der Gefäßchirurgie



15 **BV952R** 140 x 85 mm
Liver retractor
Leberhaken



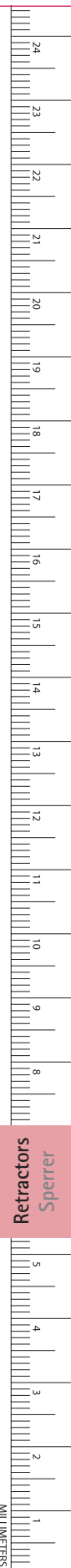
16 **BT625R** 125 x 140 mm
Liver retractor
Leberhaken



17 **BV949R** 150 x 39 mm
Retractor blade KELLY
Wundhaken KELLY



26 **RT153R** 115 x 65 mm
Coryllos Retractor
Coryllos Retraktor



Retractors
Sperrer

MILLIMETERS

Retraction Systems, Retractors, Hooks – Sperrersysteme, Spreizer und Wundhaken

Wound and Vein Retractors

Wund- und Venenhaken

Dimensions for blade size of retractors

1st number = depth Example: 25 x 38 mm

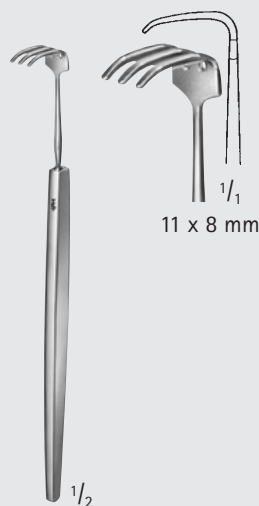
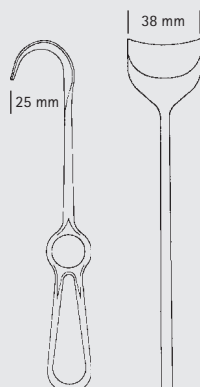
2nd number = width

Maßangaben für Blattgrößen der Wundhaken

1. Zahl = Tiefe

Beispiel: 25 x 38 mm

2. Zahl = Breite



PAUL

OA340R

120 mm, 4 3/4"



BT170R

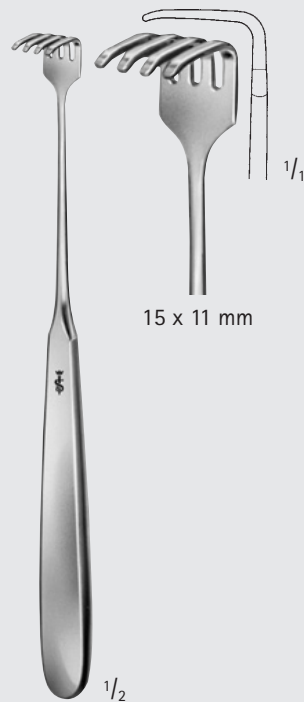
12 x 6 mm

BT171R

12 x 11 mm

BT170R-BT171R

175 mm, 7"



KLAPP

BT172R

175 mm, 7"



BT180R

15 x 6 mm
blunt
stumpf

BT181R

15 x 6 mm
serrated
gezahnt

STRANDELL-STILLE

BT180R-BT181R

180 mm, 7"



Retraction Systems, Retractors, Hooks – Sperrersysteme, Spreizer und Wundhaken

Wound and Vein Retractors

Wund- und Venenhaken

Retractor	Model	Dimensions
MASING	OL211R	140 mm, 5 1/2"
COTTLE	OL212R	140 mm, 5 1/2"
DESMARRES	OA310R-OA314R	140 mm, 5 1/2"
KÖNIG	BT182R-BT183R	180 mm, 7"
CUSHING-KOCHER	BT190R	175 mm, 7"
KOCHER	BT457R-BT458R	205 mm, 8"

MASING
OL211R
140 mm, 5 1/2"

COTTLE
OL212R
140 mm, 5 1/2"

DESMARRES
OA310R-OA314R
140 mm, 5 1/2"

KÖNIG
BT182R-BT183R
180 mm, 7"

CUSHING-KOCHER
BT190R
175 mm, 7"

KOCHER
BT457R-BT458R
205 mm, 8"

Retractors Sperrer

Retraction Systems, Retractors, Hooks – Sperrersysteme, Spreizer und Wundhaken

Wound and Vein Retractors

Wund- und Venenhaken

Dimensions for blade size of retractors

1st number = depth Example: 25 x 38 mm

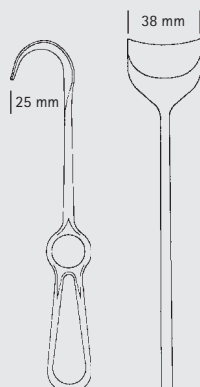
2nd number = width

Maßangaben für Blattgrößen der Wundhaken

1. Zahl = Tiefe

Beispiel: 25 x 38 mm

2. Zahl = Breite



SCHOENBORN

BT192R

200 mm, 8"



CUSHING

BT184R-BT185R

205 mm, 8"



Retraction Systems, Retractors, Hooks – Sperrersysteme, Spreizer und Wundhaken

Wound and Vein Retractors

Wund- und Venenhaken



$\frac{1}{2}$

GIL VERNET

BT210R–BT217R

240 mm, 9 $\frac{1}{2}$ "



BT210R

10 x 4 mm



BT211R

10 x 6 mm



BT212R

10 x 8 mm



BT213R

10 x 11 mm



BT214R

13 x 15 mm



BT215R

13 x 17 mm



BT216R

14 x 20 mm



BT217R

16 x 23 mm

Retractors
Sperrer

MILLIMETERS

Retraction Systems, Retractors, Hooks – Sperrersysteme, Spreizer und Wundhaken

Wound and Vein Retractors

Wund- und Venenhaken

Dimensions for blade size of retractors

1st number = depth Example: 25 x 38 mm

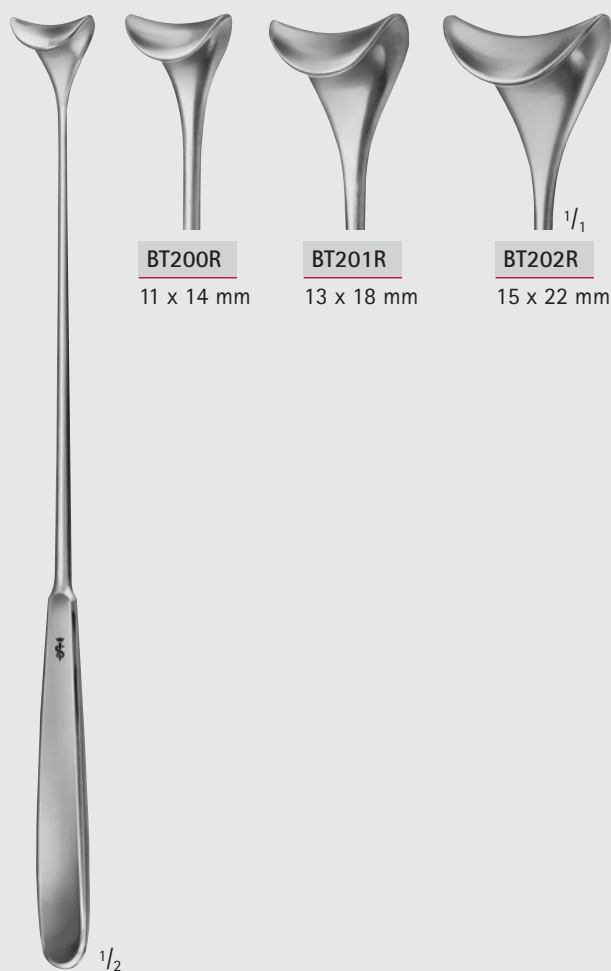
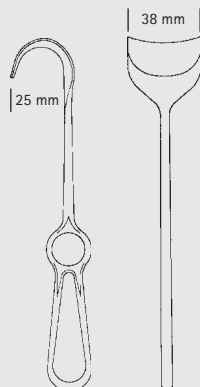
2nd number = width

Maßangaben für Blattgrößen der Wundhaken

1. Zahl = Tiefe

Beispiel: 25 x 38 mm

2. Zahl = Breite



CUSHING

BT200R-BT202R

250 mm, 10"



BT206R

Small dissecting hook

Präparationshäkchen

235 mm, 9 1/4"